

## DIPK2B RABBIT PAB

**Cat.#:** S220486

**Product Name:** Anti-DIPK2B Rabbit Polyclonal Antibody

**Synonyms:** DIAIR; CXorf36; PRO3743; EPQL1862; bA435K1.1; 4930578C19Rik

**UNIPROT ID:** Q9H7Y0 (Gene Accession - NP\_078965 )

**Background:** The function of this protein remains unknown.

**Immunogen:** Synthetic peptide of human DIPK2B

**Applications:** ELISA, IHC

**Recommended Dilutions:** IHC: 25-100; ELISA: 5000-10000

**Host Species:** Rabbit

**Clonality:** Rabbit Polyclonal

**Isotype:** Immunogen-specific rabbit IgG

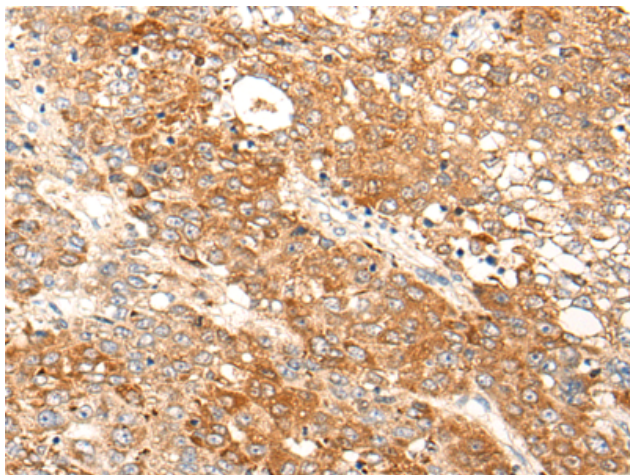
**Purification:** Antigen affinity purification

**Species Reactivity:** Human, Mouse

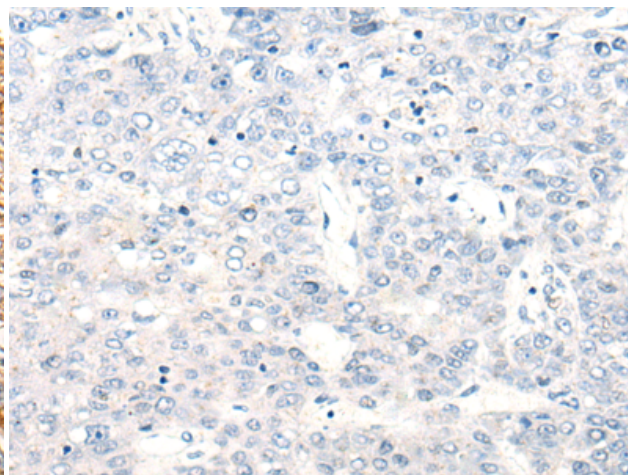
**Constituents:** PBS (without Mg<sup>2+</sup> and Ca<sup>2+</sup>), pH 7.4, 150 mM NaCl, 0.05% Sodium Azide and 40% glycerol

**Research Areas:** Cell Biology

**Storage & Shipping:** Store at -20°C. Avoid repeated freezing and thawing



Immunohistochemistry analysis of paraffin embedded Human liver cancer tissue using 220486(DIPK2B Antibody) at a dilution of 1/25(Cytoplasm).



In comparison with the IHC on the left, the same paraffin-embedded Human liver cancer tissue is first treated with the synthetic peptide and then with 220486(Anti-DIPK2B Antibody) at dilution 1/25.