

## DIP2A RABBIT PAB

**Cat.#:** S218920

**Product Name:** Anti-DIP2A Rabbit Polyclonal Antibody

**Synonyms:** DIP2; C21orf106

**UNIPROT ID:** Q14689 (Gene Accession - BC038443 )

**Background:** The protein encoded by this gene may be involved in axon patterning in the central nervous system. This gene is not highly expressed. Several transcript variants encoding different isoforms have been found for this gene.

**Immunogen:** Fusion protein of human DIP2A

**Applications:** ELISA, IHC

**Recommended Dilutions:** IHC: 100-300; ELISA: 5000-10000

**Host Species:** Rabbit

**Clonality:** Rabbit Polyclonal

**Isotype:** Immunogen-specific rabbit IgG

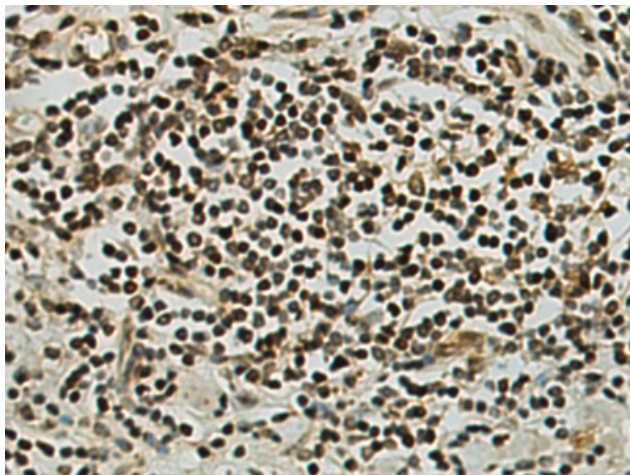
**Purification:** Antigen affinity purification

**Species Reactivity:** Human, Mouse

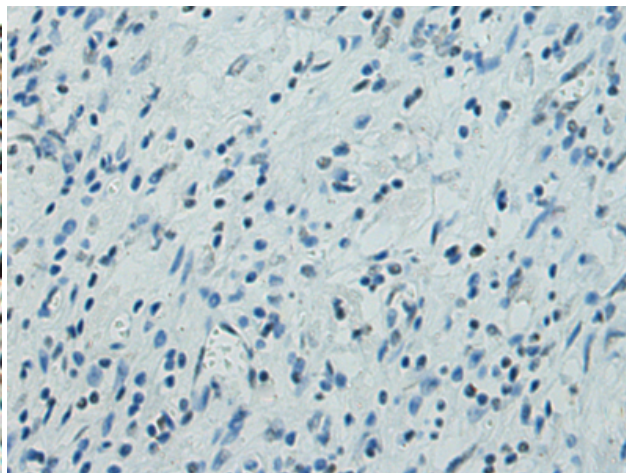
**Constituents:** PBS (without Mg<sup>2+</sup> and Ca<sup>2+</sup>), pH 7.4, 150 mM NaCl, 0.05% Sodium Azide and 40% glycerol

**Research Areas:** Cancer

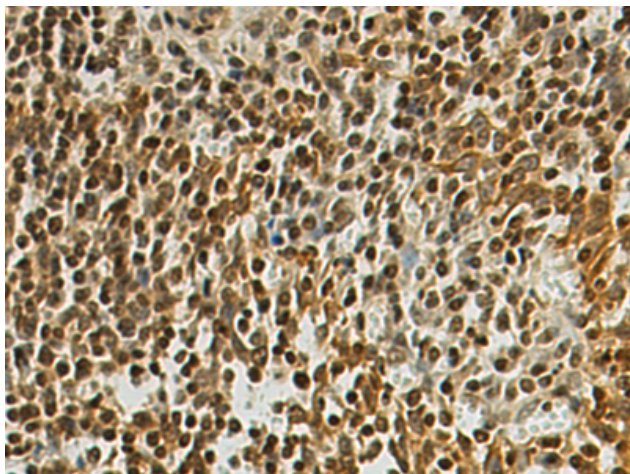
**Storage & Shipping:** Store at -20°C. Avoid repeated freezing and thawing



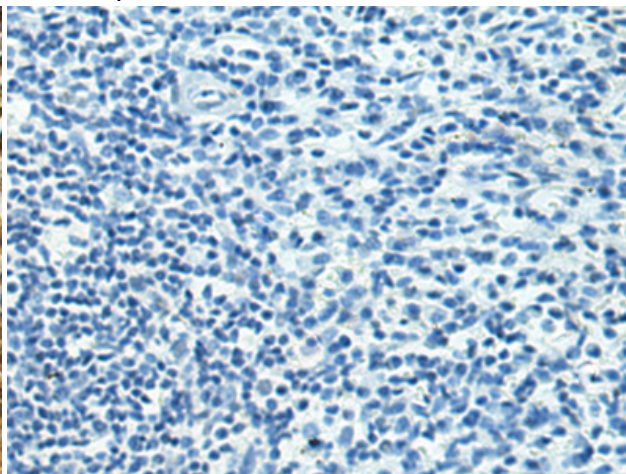
Immunohistochemistry analysis of paraffin embedded Human colorectal cancer tissue using 218920(DIP2A Antibody) at a dilution of 1/120(Nucleus).



In comparison with the IHC on the left, the same paraffin-embedded Human colorectal cancer tissue is first treated with the fusion protein and then with 218920(Anti-DIP2A Antibody) at dilution 1/120.



The image on the left is immunohistochemistry of paraffin-embedded Human tonsil tissue using 218920(Anti-DIP2A Antibody) at a dilution of 1/120.



In comparison with the IHC on the left, the same paraffin-embedded Human tonsil tissue is first treated with fusion protein and then with D225519(Anti-DIP2A Antibody) at dilution 1/120.