

DHX8 RABBIT PAB

Cat.#: S219423

Product Name: Anti-DHX8 Rabbit Polyclonal Antibody

Synonyms: DDX8; Dhr2; HRH1; PRP22; PRPF22

UNIPROT ID: Q14562 (Gene Accession - BC044586)

Background: This gene is a member of the DEAH box polypeptide family. The encoded protein contains the DEAH (Asp-Glu-Ala-His) motif which is characteristic of all DEAH box proteins, and is thought to function as an ATP-dependent RNA helicase that regulates the release of spliced mRNAs from spliceosomes prior to their export from the nucleus. This protein may be required for the replication of human immunodeficiency virus type 1 (HIV-1). Alternative splicing results in multiple transcript variants. [provided by RefSeq, Oct 2014]

Immunogen: Fusion protein of human DHX8

Applications: ELISA, IHC

Recommended Dilutions: IHC: 100-300; ELISA: 5000-10000

Host Species: Rabbit

Clonality: Rabbit Polyclonal

Isotype: Immunogen-specific rabbit IgG

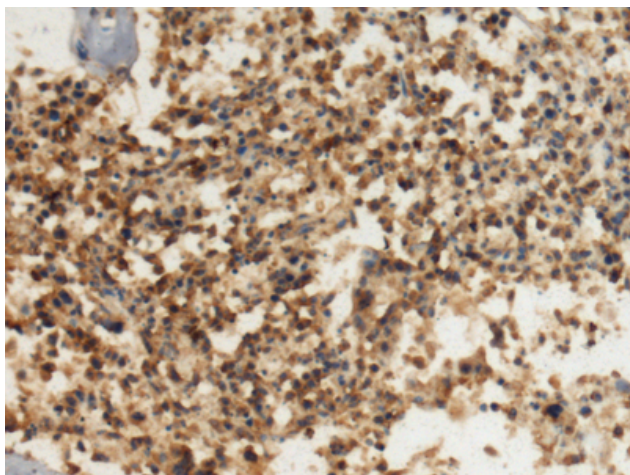
Purification: Antigen affinity purification

Species Reactivity: Human, Mouse

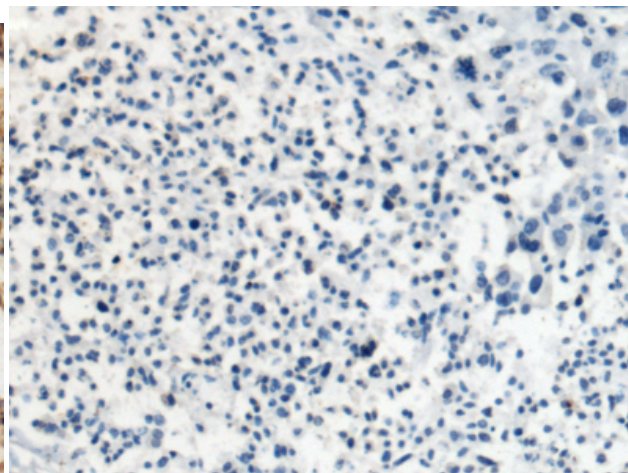
Constituents: PBS (without Mg²⁺ and Ca²⁺), pH 7.4, 150 mM NaCl, 0.05% Sodium Azide and 40% glycerol

Research Areas: Epigenetics and Nuclear Signaling

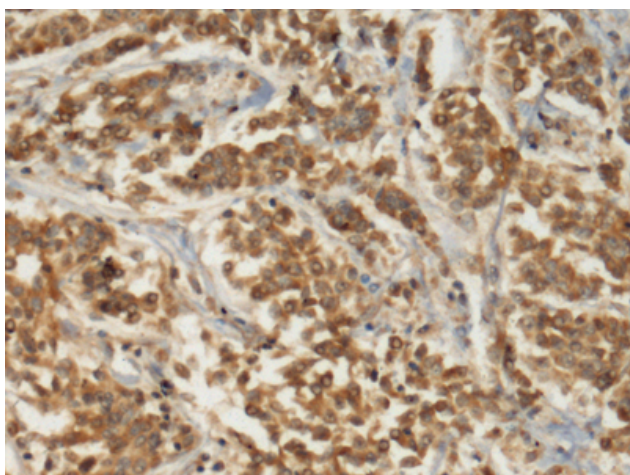
Storage & Shipping: Store at -20°C. Avoid repeated freezing and thawing



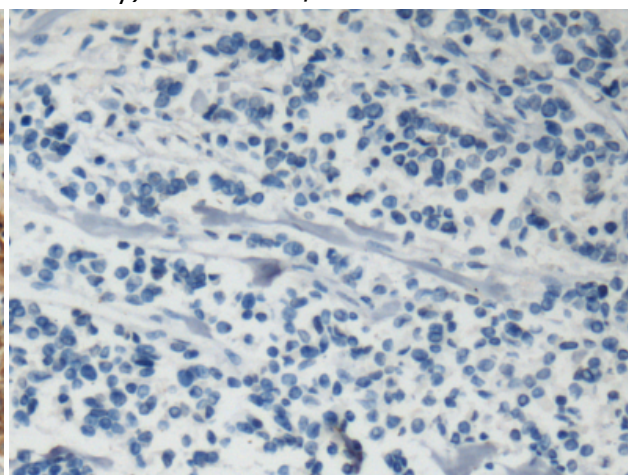
Immunohistochemistry analysis of paraffin embedded Human ovarian cancer tissue using 219423(DHX8 Antibody) at a dilution of 1/100(Cytoplasm).



In comparison with the IHC on the left, the same paraffin-embedded Human ovarian cancer tissue is first treated with the fusion protein and then with 219423(Anti-DHX8 Antibody) at dilution 1/100.



The image on the left is immunohistochemistry of paraffin-embedded Human breast cancer tissue using 219423(Anti-DHX8 Antibody) at a dilution of 1/100.



In comparison with the IHC on the left, the same paraffin-embedded Human breast cancer tissue is first treated with fusion protein and then with D226885(Anti-DHX8 Antibody) at dilution 1/100.