

## DHX8 RABBIT MAB

**Cat.#:** N262133

**Product Name:** Anti-DHX8 Rabbit Monoclonal Antibody

**Synonyms:** DDX8; Dhr2; HRH1; PRP22; PRPF22

**UNIPROT ID:** Q14562

**Background:** Facilitates nuclear export of spliced mRNA by releasing the RNA from the spliceosome.

**Immunogen:** A synthetic peptide of human DHX8

**Applications:** WB, ICC/IF

**Recommended Dilutions:** WB: 1/500-1/1000 IF: 1/50-1/200

**Host Species:** Rabbit

**Clonality:** Rabbit Monoclonal

**Clone ID:** R04-117

**MW:** Calculated MW: 139 kDa; Observed MW: 139 kDa

**Isotype:** IgG

**Purification:** Affinity Purified

**Species Reactivity:** Human

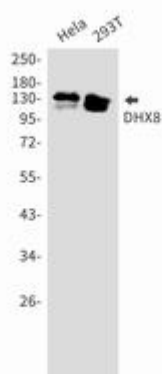
**Conjugation:** Unconjugated

**Modification:** Unmodified

**Constituents:** PBS (without Mg<sup>2+</sup> and Ca<sup>2+</sup>), pH 7.3 containing 50% glycerol, 0.5% BSA and 0.02% sodium azide

**Research Areas:** Epigenetics and Nuclear Signaling

**Storage & Shipping:** Store at -20°C. Avoid repeated freezing and thawing



Western blot analysis of DHX8 in HeLa, 293T lysates using DHX8 antibody.