

## DHR SX RABBIT PAB

**Cat.#:** S218155

**Product Name:** Anti-DHR SX Rabbit Polyclonal Antibody

**Synonyms:** DHR SY; DHR S5X; DHR S5Y; DHR SX Y; SDR 7C6; CXorf11; SDR 46C1

**UNIPROT ID:** Q8N5I4 (Gene Accession - BC032340 )

**Background:** Predicted to enable oxidoreductase activity. Involved in positive regulation of autophagy. Located in extracellular region.

**Immunogen:** Fusion protein of human DHR SX

**Applications:** ELISA, IHC

**Recommended Dilutions:** IHC: 50-200; ELISA: 5000-10000

**Host Species:** Rabbit

**Clonality:** Rabbit Polyclonal

**Isotype:** Immunogen-specific rabbit IgG

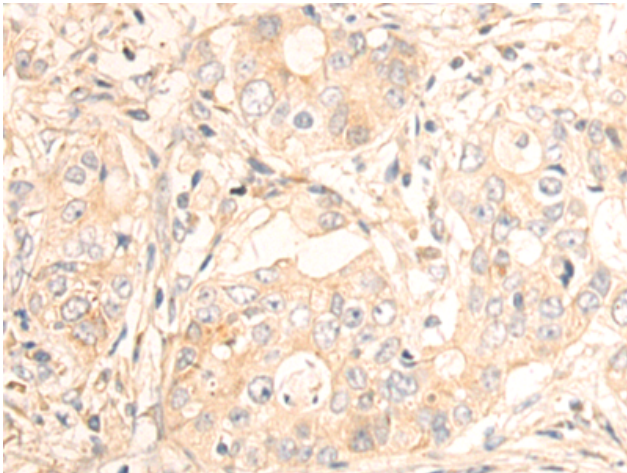
**Purification:** Antigen affinity purification

**Species Reactivity:** Human

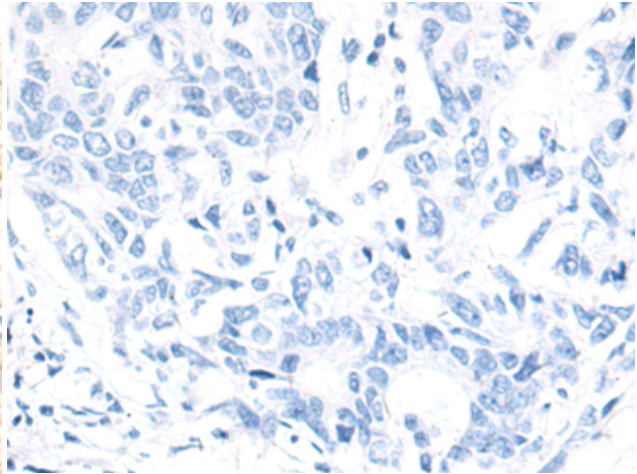
**Constituents:** PBS (without Mg<sup>2+</sup> and Ca<sup>2+</sup>), pH 7.4, 150 mM NaCl, 0.05% Sodium Azide and 40% glycerol

**Research Areas:** Cell Biology

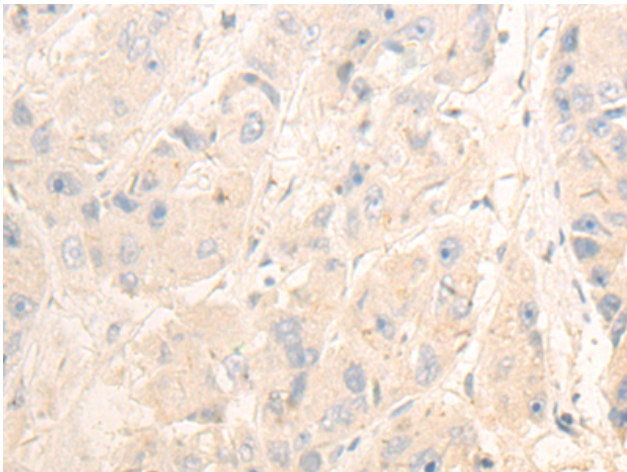
**Storage & Shipping:** Store at -20°C. Avoid repeated freezing and thawing



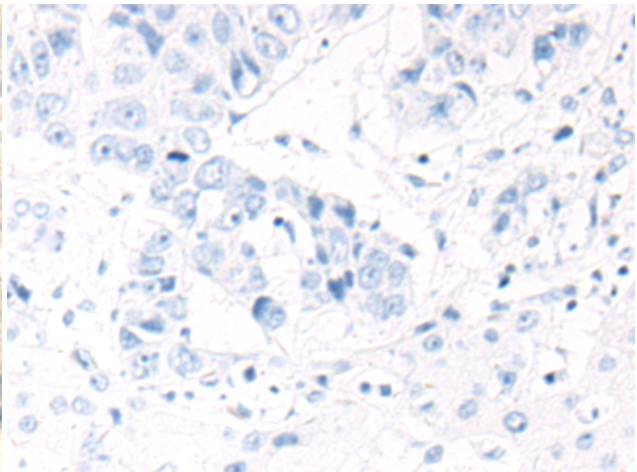
Immunohistochemistry analysis of paraffin embedded Human gastric cancer tissue using 218155 (DHR SX Antibody) at a dilution of 1/80 (Cytoplasm).



In comparison with the IHC on the left, the same paraffin-embedded Human gastric cancer tissue is first treated with the fusion protein and then with 218155 (Anti-DHR SX Antibody) at dilution 1/80.



The image on the left is immunohistochemistry of paraffin-embedded Human liver cancer tissue using 218155 (Anti-DHR SX Antibody) at a dilution of 1/80.



In comparison with the IHC on the left, the same paraffin-embedded Human liver cancer tissue is first treated with fusion protein and then with D223837 (Anti-DHR SX Antibody) at dilution 1/80.