

DGLUCY RABBIT PAB

Cat.#: S218813

Product Name: Anti-DGLUCY Rabbit Polyclonal Antibody

Synonyms: C14orf159

UNIPROT ID: Q7Z3D6 (Gene Accession - BC009182)

Background: D-glutamate cyclase that converts D-glutamate to 5-oxo-D-proline.

Immunogen: Fusion protein of human DGLUCY

Applications: ELISA, WB, IHC

Recommended Dilutions: IHC: 25-100;WB: 500-2000;ELISA: 5000-10000

Host Species: Rabbit

Clonality: Rabbit Polyclonal

Isotype: Immunogen-specific rabbit IgG

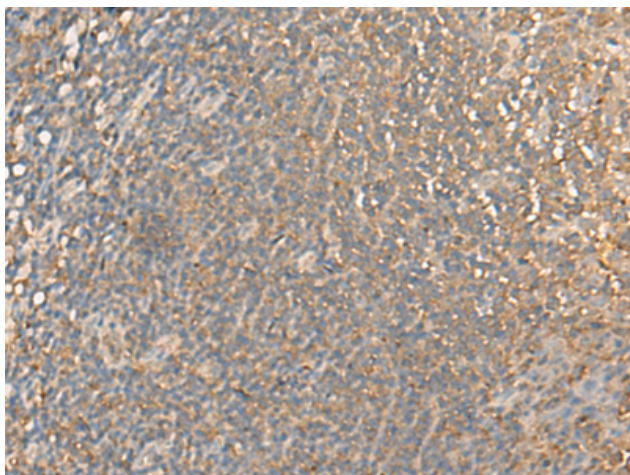
Purification: Antigen affinity purification

Species Reactivity: Human

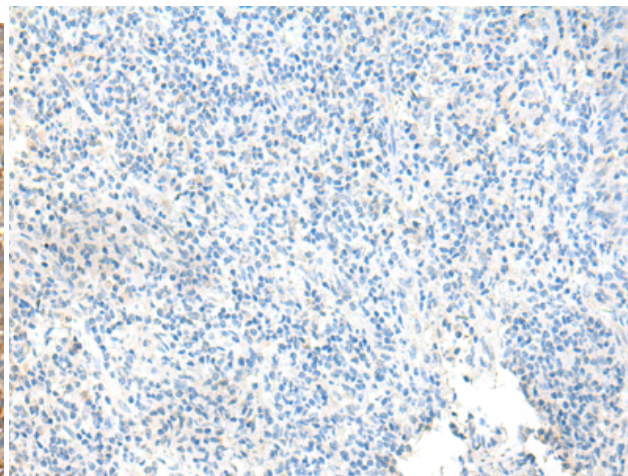
Constituents: PBS (without Mg²⁺ and Ca²⁺), pH 7.4, 150 mM NaCl, 0.05% Sodium Azide and 40% glycerol

Research Areas: Cell Biology

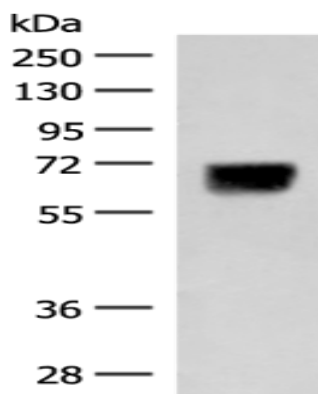
Storage & Shipping: Store at -20°C. Avoid repeated freezing and thawing



Immunohistochemistry analysis of paraffin embedded Human tonsil tissue using 218813(DGLUCY Antibody) at a dilution of 1/40(Cytoplasm and Cell membrane).



In comparison with the IHC on the left, the same paraffin-embedded Human tonsil tissue is first treated with the fusion protein and then with 218813(Anti-DGLUCY Antibody) at dilution 1/40.



Gel: 8%SDS-PAGE, Lysate: 40 μ g;
Lane: Human thyroid tissue lysate;
Primary antibody: 218813(DGLUCY Antibody) at dilution 1/250;
Secondary antibody: Goat anti rabbit IgG at 1/8000 dilution;
Exposure time: 20 seconds