

DGCR8 RABBIT MAB

Cat.#: N262131

Product Name: Anti-DGCR8 Rabbit Monoclonal Antibody

Synonyms: DGCR8; DGCRK6; Gyl; C22orf12; D16Wis2; pasha

UNIPROT ID: Q8WYQ5

Background: Component of the microprocessor complex that is required to process primary miRNA transcripts (pri-miRNAs) to release precursor miRNA (pre-miRNA) in the nucleus. Within the microprocessor complex, DGCR8 function as a molecular anchor necessary for the recognition of pri-miRNA at dsRNA-ssRNA junction and directs DROSHA to cleave 11 bp away from the junction to release hairpin-shaped pre-miRNAs that are subsequently cut by the cytoplasmic DICER to generate mature miRNAs.

Immunogen: Recombinant protein of human DGCR8

Applications: WB, ICC/IF, IP

Recommended Dilutions: WB: 1/500-1/1000 IF: 1/50-1/200 IP: 1/20

Host Species: Rabbit

Clonality: Rabbit Monoclonal

Clone ID: R05-5A6

MW: Calculated MW: 86 kDa; Observed MW: 120 kDa

Isotype: IgG

Purification: Affinity Purified

Species Reactivity: Human, Mouse, Rat

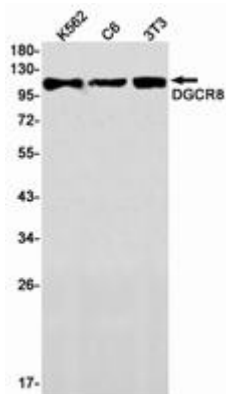
Conjugation: Unconjugated

Modification: Unmodified

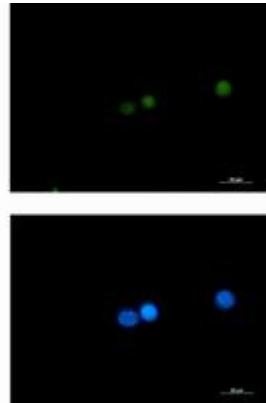
Constituents: PBS (without Mg²⁺ and Ca²⁺), pH 7.3 containing 50% glycerol, 0.5% BSA and 0.02% sodium azide

Research Areas: Epigenetics and Nuclear Signaling

Storage & Shipping: Store at -20°C. Avoid repeated freezing and thawing



Western blot analysis of DGCR8 in K562, C6, 3T3 lysates using DGCR8 antibody.



Immunocytochemistry analysis of DGCR8 (green) in K562 using DGCR8 antibody, and DAPI (blue).