

DEPTOR RABBIT PAB

Cat.#: S219384

Product Name: Anti-DEPTOR Rabbit Polyclonal Antibody

Synonyms: DEP.6; DEPDC6

UNIPROT ID: Q8TB45 (Gene Accession - BC024746)

Background: Negative regulator of the mTORC1 and mTORC2 signaling pathways. Inhibits the kinase activity of both complexes.

Immunogen: Fusion protein of human DEPTOR

Applications: ELISA, WB, IHC

Recommended Dilutions: IHC: 150-300;WB: 1000-5000;ELISA: 5000-10000

Host Species: Rabbit

Clonality: Rabbit Polyclonal

Isotype: Immunogen-specific rabbit IgG

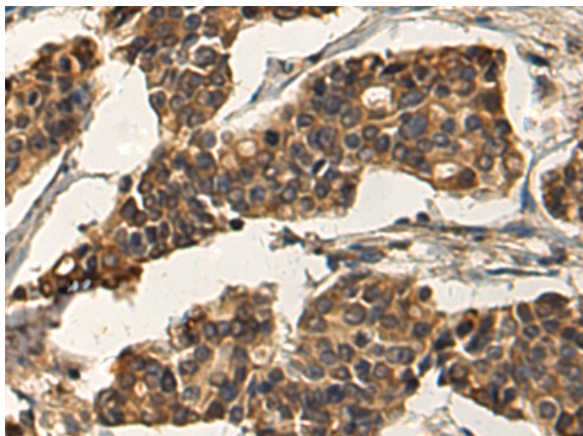
Purification: Antigen affinity purification

Species Reactivity: Human, Mouse

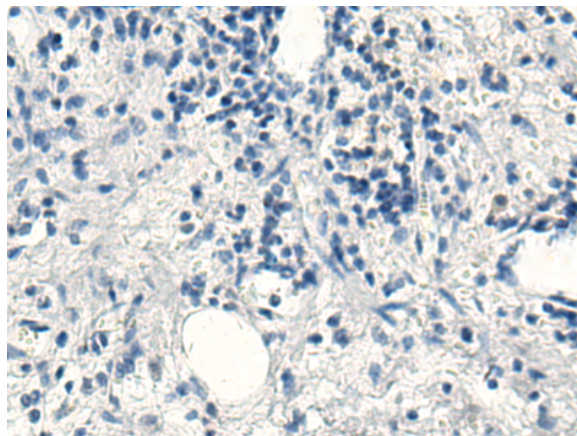
Constituents: PBS (without Mg²⁺ and Ca²⁺), pH 7.4, 150 mM NaCl, 0.05% Sodium Azide and 40% glycerol

Research Areas: Cell Biology

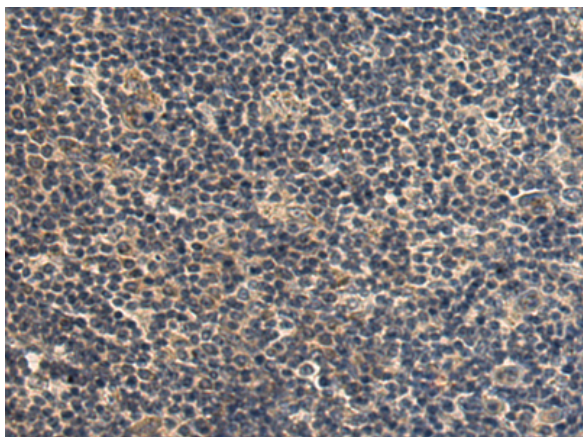
Storage & Shipping: Store at -20°C. Avoid repeated freezing and thawing



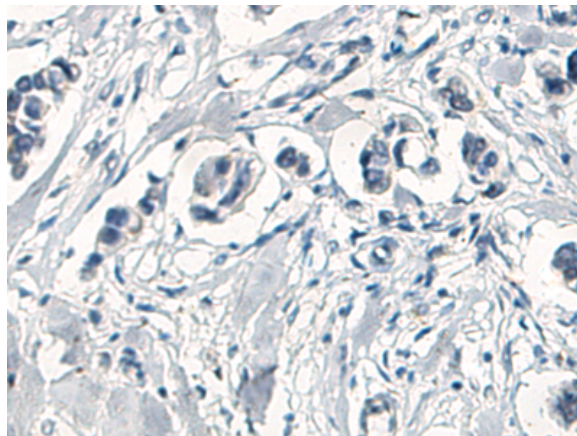
Immunohistochemistry analysis of paraffin embedded Human breast cancer tissue using 219384(DEPTOR Antibody) at a dilution of 1/120(Cytoplasm).



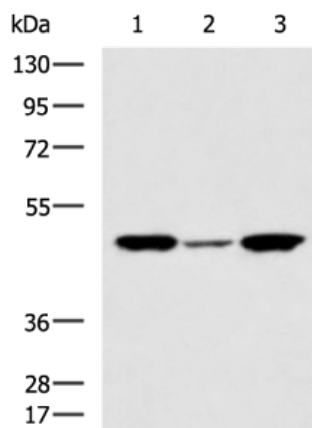
In comparison with the IHC on the left, the same paraffin-embedded Human breast cancer tissue is first treated with the fusion protein and then with 219384(Anti-DEPTOR Antibody) at dilution 1/120.



The image on the left is immunohistochemistry of paraffin-embedded Human esophagus cancer tissue using 219384(Anti-DEPTOR Antibody) at a dilution of 1/120.



In comparison with the IHC on the left, the same paraffin-embedded Human esophagus cancer tissue is first treated with fusion protein and then with D226602(Anti-DEPTOR Antibody) at dilution 1/120.



Gel: 8%SDS-PAGE, Lysate: 40 µg;
Lane 1-3: LOVO, 231 and 293T cell lysates;
Primary antibody: 219384(DEPTOR Antibody) at dilution 1/1000;
Secondary antibody: HRP-conjugated Goat anti rabbit IgG at 1/5000 dilution;
Exposure time: 1 minute



Product Description

Pioneering GTPase and Oncogene Product Development since 2010
