

## DELTA 1 CATENIN RABBIT MAB

**Cat.#:** N262126

**Product Name:** Anti-delta 1 Catenin Rabbit Monoclonal Antibody

**Synonyms:** CAS; p120; BCDS2; CTNND; P120CAS; P120CTN; p120(CAS); p120(CTN)

**UNIPROT ID:** O60716

**Background:** Catenin  $\delta$ -1 (p120 catenin) has an amino-terminal coiled-coil domain followed by a regulatory domain containing multiple phosphorylation sites and a central Armadillo repeat domain of ten linked 42-amino acid repeats. The carboxy-terminal tail has no known function. Catenin  $\delta$ -1 fulfills critical roles in the regulation of cell-cell adhesion as it regulates E-cadherin turnover at the cell surface to determine the level of E-cadherin available for cell-cell adhesion.

**Immunogen:** A synthetic peptide of human delta 1 Catenin

**Applications:** WB,IHC-P,IP

**Recommended Dilutions:** WB: 1/500-1/1000 IHC: 1/50-1/100 IP: 1/20

**Host Species:** Rabbit

**Clonality:** Rabbit Monoclonal

**Clone ID:** R01-4G3

**MW:** Calculated MW: 108 kDa; Observed MW: 108 kDa

**Isotype:** IgG

**Purification:** Affinity Purified

**Species Reactivity:** Human,Mouse,Rat

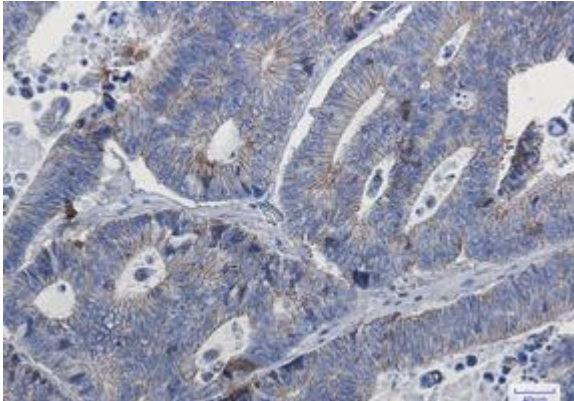
**Conjugation:** Unconjugated

**Modification:** Unmodified

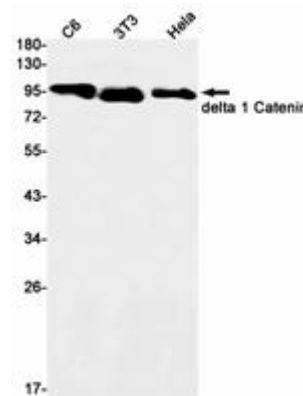
**Constituents:** PBS (without Mg<sup>2+</sup> and Ca<sup>2+</sup>), pH 7.3 containing 50% glycerol, 0.5% BSA and 0.02% sodium azide

**Research Areas:** Cell Biology

**Storage & Shipping:** Store at -20°C. Avoid repeated freezing and thawing



Immunohistochemistry analysis of paraffin-embedded Human colon cancer using delta 1 Catenin antibody. High-pressure and temperature Sodium Citrate pH 6.0 was used for antigen retrieval.



Western blot analysis of delta 1 Catenin in C6, 3T3, HeLa lysates using delta 1 Catenin antibody.