

## DEK RABBIT MAB

**Cat.#:** N262125

**Product Name:** Anti-DEK Rabbit Monoclonal Antibody

**Synonyms:** Dek; DEK oncogene; Protein DEK

**UNIPROT ID:** P35659

**Background:** Involved in chromatin organization.

**Immunogen:** Recombinant protein of human DEK

**Applications:** WB,IHC-P,IP

**Recommended Dilutions:** WB: 1/500-1/1000 IHC: 1/50-1/100 IP: 1/20

**Host Species:** Rabbit

**Clonality:** Rabbit Monoclonal

**Clone ID:** R06-5D2

**MW:** Calculated MW: 43 kDa; Observed MW: 50 kDa

**Isotype:** IgG

**Purification:** Affinity Purified

**Species Reactivity:** Human

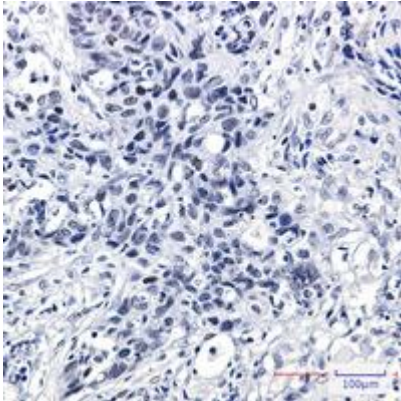
**Conjugation:** Unconjugated

**Modification:** Unmodified

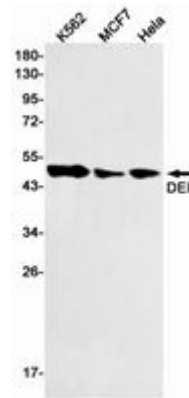
**Constituents:** PBS (without Mg<sup>2+</sup> and Ca<sup>2+</sup>), pH 7.3 containing 50% glycerol, 0.5% BSA and 0.02% sodium azide

**Research Areas:** Epigenetics and Nuclear Signaling

**Storage & Shipping:** Store at -20°C. Avoid repeated freezing and thawing



Immunohistochemistry analysis of paraffin-embedded Human lung cancer using DEK antibody. High-pressure and temperature Sodium Citrate pH 6.0 was used for antigen retrieval.



Western blot analysis of DEK in K562, MCF-7, HeLa lysates using DEK antibody.