

DEFB4A RABBIT PAB

Cat.#: S221221

Product Name: Anti-DEFB4A Rabbit Polyclonal Antibody

Synonyms: BD-2; SAPI; DEFB2; DEFB4; HBD-2; DEFB-2; DEFB102

UNIPROT ID: O15263 (Gene Accession - NP_004933)

Background: Defensins form a family of microbicidal and cytotoxic peptides made by neutrophils. Members of the defensin family are highly similar in protein sequence. This gene encodes defensin, beta 4, an antibiotic peptide which is locally regulated by inflammation.

Immunogen: Synthetic peptide of human DEFB4A

Applications: ELISA, IHC

Recommended Dilutions: IHC: 50-200; ELISA: 5000-10000

Host Species: Rabbit

Clonality: Rabbit Polyclonal

Isotype: Immunogen-specific rabbit IgG

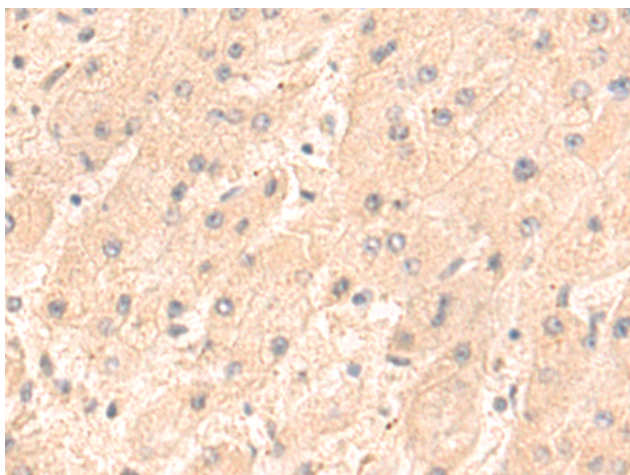
Purification: Antigen affinity purification

Species Reactivity: Human

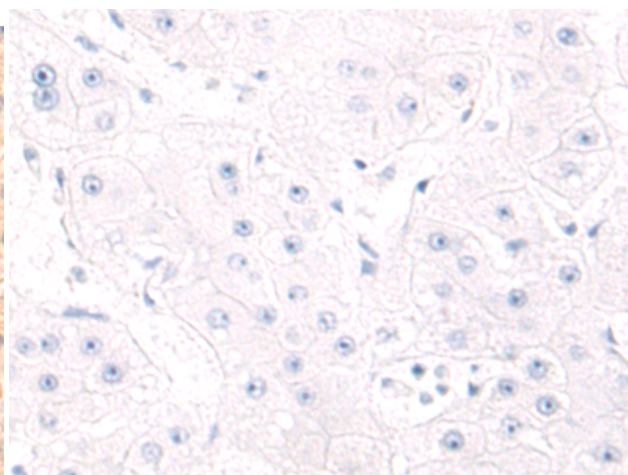
Constituents: PBS (without Mg²⁺ and Ca²⁺), pH 7.4, 150 mM NaCl, 0.05% Sodium Azide and 40% glycerol

Research Areas: Signal Transduction

Storage & Shipping: Store at -20°C. Avoid repeated freezing and thawing



Immunohistochemistry analysis of paraffin embedded Human liver cancer tissue using 221221(DEFB4A Antibody) at a dilution of 1/75(Secreted).



In comparison with the IHC on the left, the same paraffin-embedded Human liver cancer tissue is first treated with the synthetic peptide and then with 221221(Anti-DEFB4A Antibody) at dilution 1/75.