

DEFA5 RABBIT PAB

Cat.#: S220367

Product Name: Anti-DEFA5 Rabbit Polyclonal Antibody

Synonyms: DEF5; HD-5

UNIPROT ID: Q01523 (Gene Accession - NP_066290)

Background: Defensins are a family of microbicidal and cytotoxic peptides thought to be involved in host defense. They are abundant in the granules of neutrophils and also found in the epithelia of mucosal surfaces such as those of the intestine, respiratory tract, urinary tract, and vagina. Members of the defensin family are highly similar in protein sequence and distinguished by a conserved cysteine motif. Several of the alpha defensin genes appear to be clustered on chromosome 8. The protein encoded by this gene, defensin, alpha 5, is highly expressed in the secretory granules of Paneth cells of the ileum.

Immunogen: Synthetic peptide of human DEFA5

Applications: ELISA, IHC

Recommended Dilutions: IHC: 15–50; ELISA: 1000–2000

Host Species: Rabbit

Clonality: Rabbit Polyclonal

Isotype: Immunogen-specific rabbit IgG

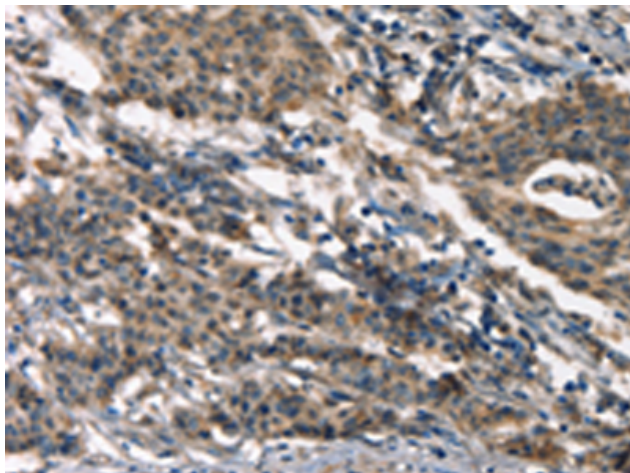
Purification: Antigen affinity purification

Species Reactivity: Human

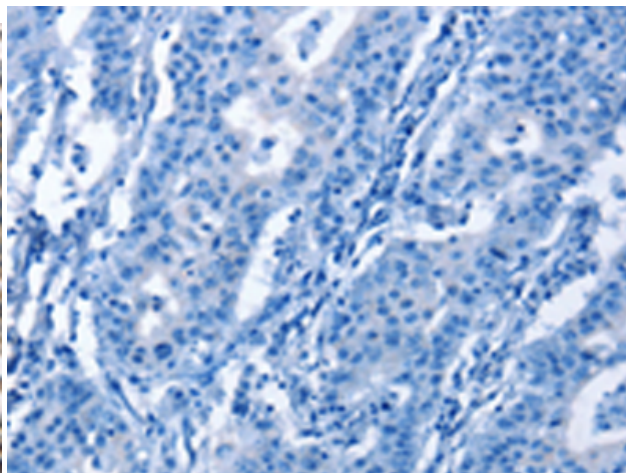
Constituents: PBS (without Mg²⁺ and Ca²⁺), pH 7.4, 150 mM NaCl, 0.05% Sodium Azide and 40% glycerol

Research Areas: Immunology

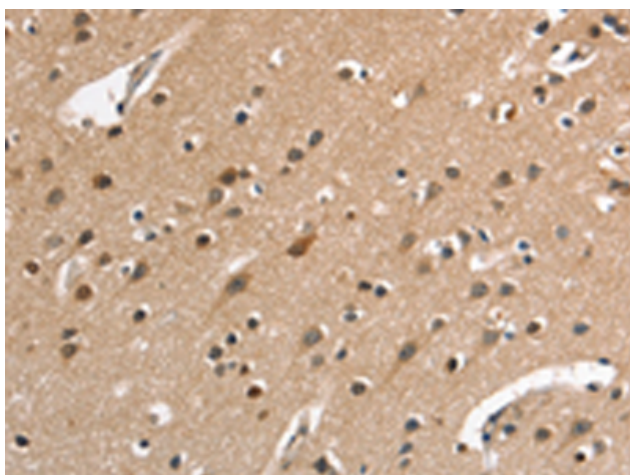
Storage & Shipping: Store at -20°C. Avoid repeated freezing and thawing



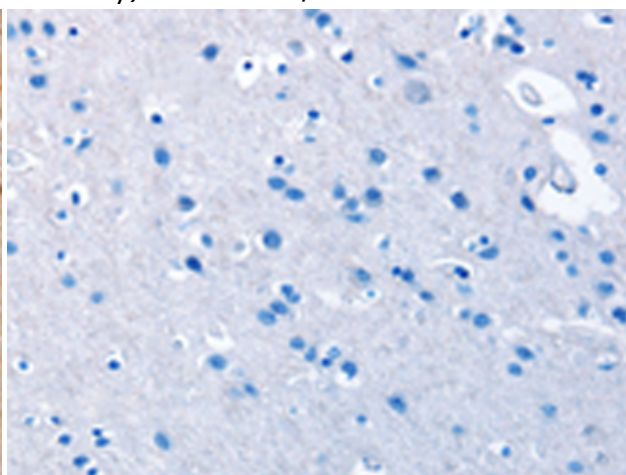
Immunohistochemistry analysis of paraffin embedded Human gastric cancer tissue using 220367(DEFA5 Antibody) at a dilution of 1/15(Cytoplasm).



In comparison with the IHC on the left, the same paraffin-embedded Human gastric cancer tissue is first treated with the synthetic peptide and then with 220367(Anti-DEFA5 Antibody) at dilution 1/15.



The image on the left is immunohistochemistry of paraffin-embedded Human brain tissue using 220367(Anti-DEFA5 Antibody) at a dilution of 1/15.



In comparison with the IHC on the left, the same paraffin-embedded Human brain tissue is first treated with synthetic peptide and then with D261435(Anti-DEFA5 Antibody) at dilution 1/15.