

DEDD2 RABBIT PAB

Cat.#: S217356

Product Name: Anti-DEDD2 Rabbit Polyclonal Antibody

Synonyms: FLAME3; FLAME-3

UNIPROT ID: Q8WXF8 (Gene Accession - BC013372)

Background: This gene encodes a nuclear-localized protein containing a death effector domain (DED). The encoded protein may regulate the trafficking of caspases and other proteins into the nucleus during death receptor-induced apoptosis. Alternative splicing results in multiple transcript variants.

Immunogen: Fusion protein of human DEDD2

Applications: ELISA, IHC

Recommended Dilutions: IHC: 100-300; ELISA: 5000-10000

Host Species: Rabbit

Clonality: Rabbit Polyclonal

Isotype: Immunogen-specific rabbit IgG

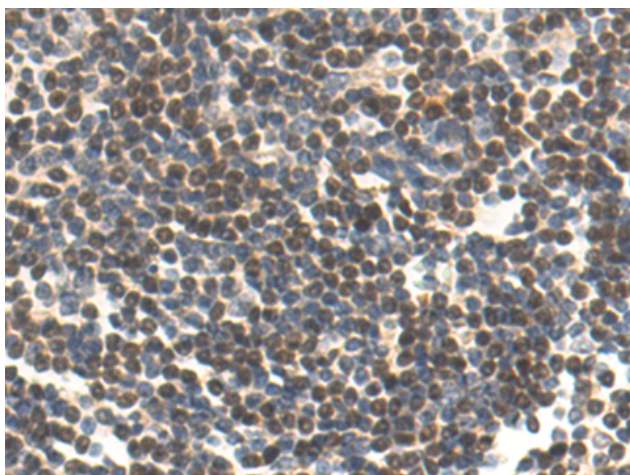
Purification: Antigen affinity purification

Species Reactivity: Human, Mouse

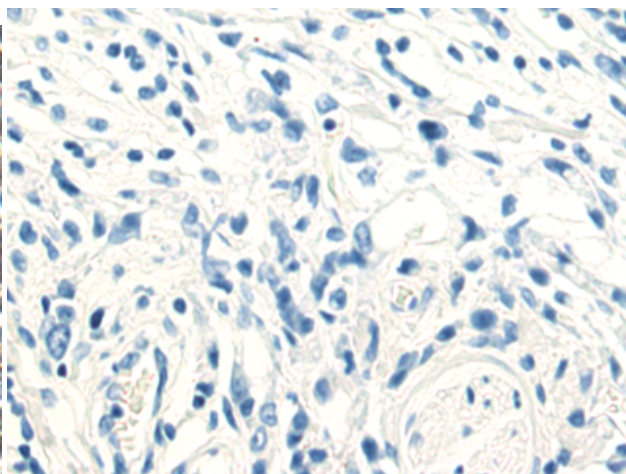
Constituents: PBS (without Mg²⁺ and Ca²⁺), pH 7.4, 150 mM NaCl, 0.05% Sodium Azide and 40% glycerol

Research Areas: Cancer

Storage & Shipping: Store at -20°C. Avoid repeated freezing and thawing



Immunohistochemistry analysis of paraffin embedded Human gastric cancer tissue using 217356(DEDD2 Antibody) at a dilution of 1/120(Nucleus).



In comparison with the IHC on the left, the same paraffin-embedded Human gastric cancer tissue is first treated with the fusion protein and then with 217356(Anti-DEDD2 Antibody) at dilution 1/120.