

## DCTPP1 RABBIT PAB

**Cat.#:** S219222

**Product Name:** Anti-DCTPP1 Rabbit Polyclonal Antibody

**Synonyms:** CDA03; RS21C6; XTP3TPA

**UNIPROT ID:** Q9H773 (Gene Accession - BC001344 )

**Background:** The protein encoded by this gene is dCTP pyrophosphatase, which converts dCTP to dCMP and inorganic pyrophosphate. The encoded protein also displays weak activity against dTTP and dATP, but none against dGTP. This protein may be responsible for eliminating excess dCTP after DNA synthesis and may prevent overmethylation of CpG islands. Three transcript variants, one protein-coding and the other two non-protein coding, have been found for this gene.

**Immunogen:** Fusion protein of human DCTPP1

**Applications:** ELISA, IHC

**Recommended Dilutions:** IHC: 100-300; ELISA: 5000-10000

**Host Species:** Rabbit

**Clonality:** Rabbit Polyclonal

**Isotype:** Immunogen-specific rabbit IgG

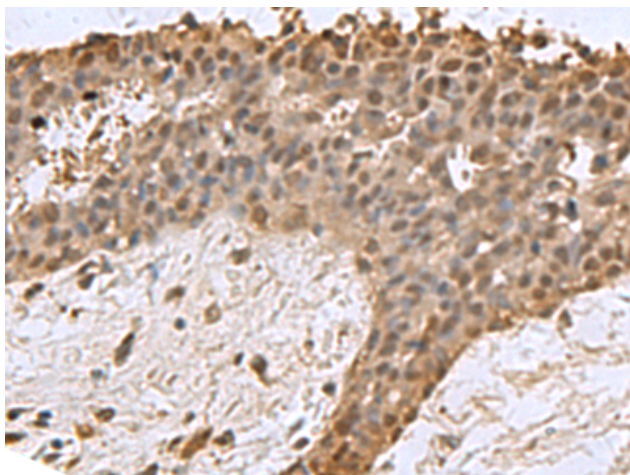
**Purification:** Antigen affinity purification

**Species Reactivity:** Human

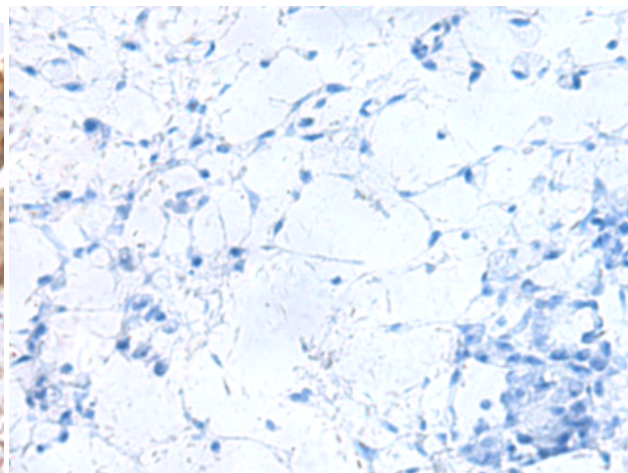
**Constituents:** PBS (without Mg<sup>2+</sup> and Ca<sup>2+</sup>), pH 7.4, 150 mM NaCl, 0.05% Sodium Azide and 40% glycerol

**Research Areas:** Epigenetics and Nuclear Signaling

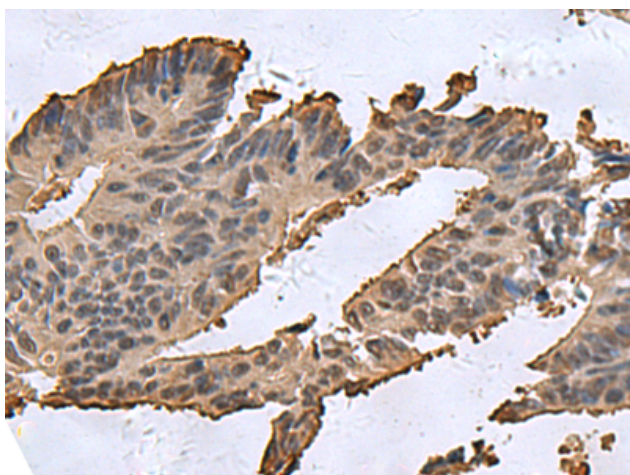
**Storage & Shipping:** Store at -20°C. Avoid repeated freezing and thawing



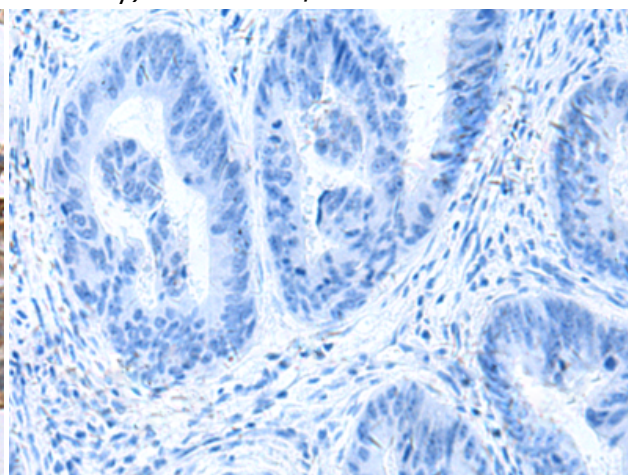
Immunohistochemistry analysis of paraffin embedded Human breast cancer tissue using 219222(DCTPPI Antibody) at a dilution of 1/85(BJ and BH).



In comparison with the IHC on the left, the same paraffin-embedded Human breast cancer tissue is first treated with the fusion protein and then with 219222(Anti-DCTPPI Antibody) at dilution 1/85.



The image on the left is immunohistochemistry of paraffin-embedded Human colorectal cancer tissue using 219222(Anti-DCTPPI Antibody) at a dilution of 1/85.



In comparison with the IHC on the left, the same paraffin-embedded Human colorectal cancer tissue is first treated with fusion protein and then with D226081(Anti-DCTPPI Antibody) at dilution 1/85.