

## DCT RABBIT PAB

**Cat.#:** S216861

**Product Name:** Anti-DCT Rabbit Polyclonal Antibody

**Synonyms:** TRP-2; TYRP2

**UNIPROT ID:** P40126 (Gene Accession - BC028311 )

**Background:** This protein can involved in regulating eumelanin and phaeomelanin levels.The subcellular location of this protein is melanosome membrane, Single-pass type I membrane protein. It may form a multienzyme complex together with Tyrosinase and TYRP1.

**Immunogen:** Fusion protein of human DCT

**Applications:** ELISA, IHC

**Recommended Dilutions:** IHC: 25-100; ELISA: 2000-5000

**Host Species:** Rabbit

**Clonality:** Rabbit Polyclonal

**Isotype:** Immunogen-specific rabbit IgG

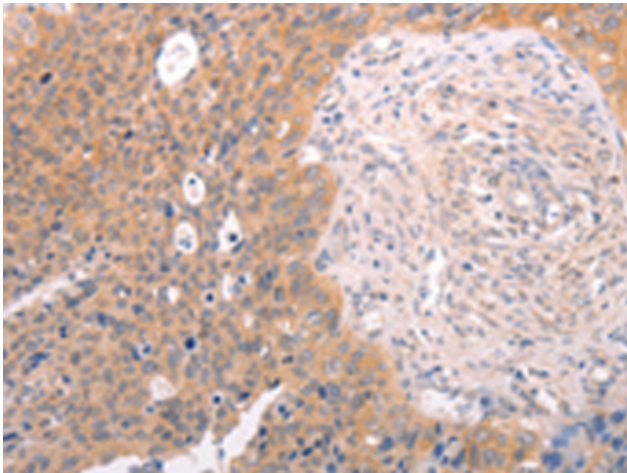
**Purification:** Antigen affinity purification

**Species Reactivity:** Human, Mouse

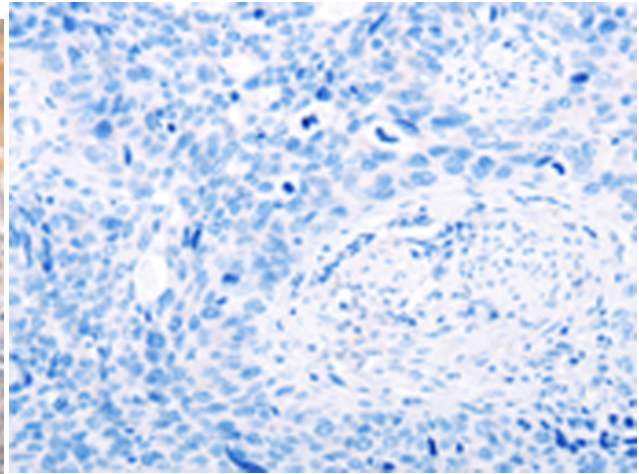
**Constituents:** PBS (without Mg<sup>2+</sup> and Ca<sup>2+</sup>), pH 7.4, 150 mM NaCl, 0.05% Sodium Azide and 40% glycerol

**Research Areas:** Metabolism, Cancer, Cell Biology

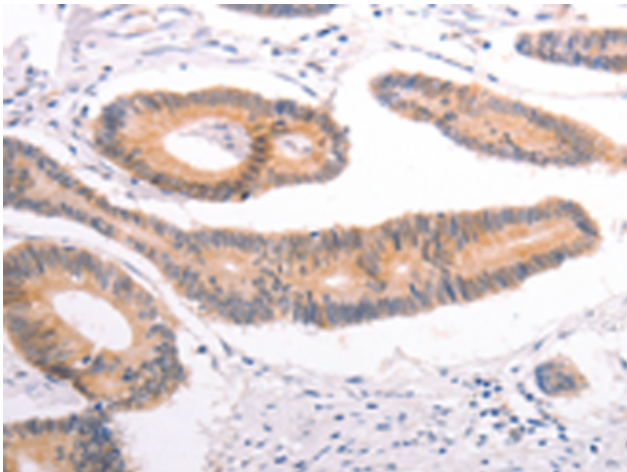
**Storage & Shipping:** Store at -20°C. Avoid repeated freezing and thawing



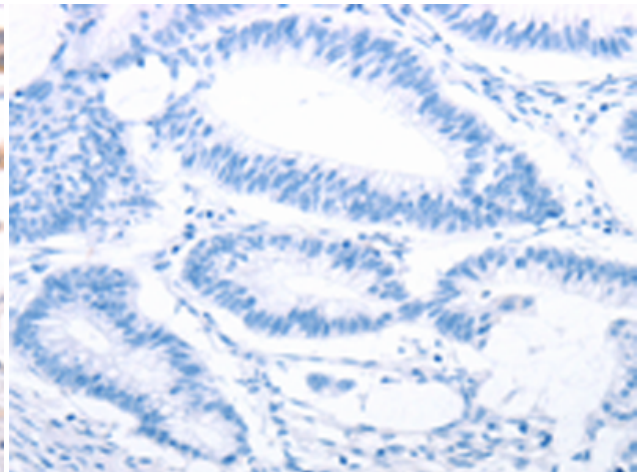
Immunohistochemistry analysis of paraffin embedded Human cervical cancer tissue using 216861(DCT Antibody) at a dilution of 1/25(Cytoplasm).



In comparison with the IHC on the left, the same paraffin-embedded Human cervical cancer tissue is first treated with the fusion protein and then with 216861(Anti-DCT Antibody) at dilution 1/25.



The image on the left is immunohistochemistry of paraffin-embedded Human colon cancer tissue using 216861(Anti-DCT Antibody) at a dilution of 1/25.



In comparison with the IHC on the left, the same paraffin-embedded Human colon cancer tissue is first treated with fusion protein and then with D221374(Anti-DCT Antibody) at dilution 1/25.