

DCP2 RABBIT PAB

Cat.#: S218579

Product Name: Anti-DCP2 Rabbit Polyclonal Antibody

Synonyms: NUDT20

UNIPROT ID: Q8IU60 (Gene Accession - BC064593)

Background: The protein encoded by this gene is a key component of an mRNA-decapping complex required for degradation of mRNAs, both in normal mRNA turnover, and in nonsense-mediated mRNA decay (NMD). It removes the 7-methyl guanine cap structure from mRNA, prior to its degradation from the 5' end. Alternatively spliced transcript variants encoding different isoforms have been noted for this gene.

Immunogen: Fusion protein of human DCP2

Applications: ELISA, WB, IHC

Recommended Dilutions: IHC: 50-200;WB: 1000-5000;ELISA: 5000-10000

Host Species: Rabbit

Clonality: Rabbit Polyclonal

Isotype: Immunogen-specific rabbit IgG

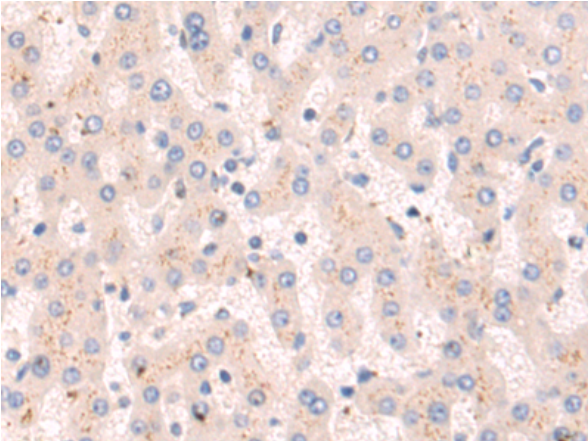
Purification: Antigen affinity purification

Species Reactivity: Human, Mouse

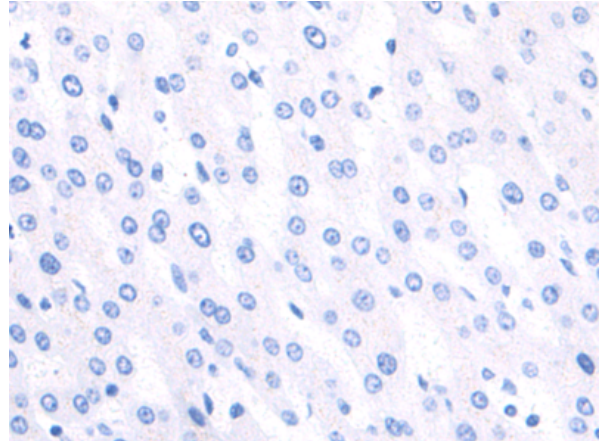
Constituents: PBS (without Mg²⁺ and Ca²⁺), pH 7.4, 150 mM NaCl, 0.05% Sodium Azide and 40% glycerol

Research Areas: Epigenetics and Nuclear Signaling

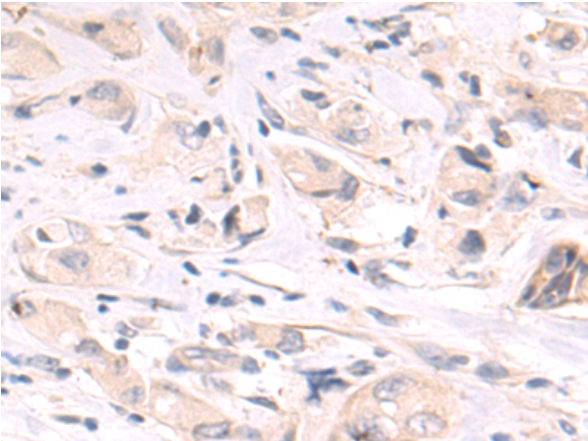
Storage & Shipping: Store at -20°C. Avoid repeated freezing and thawing



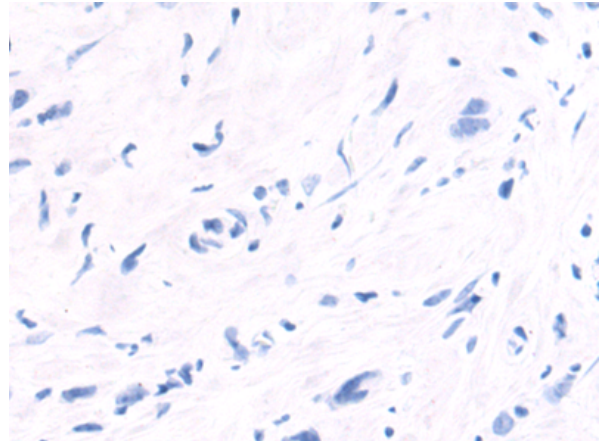
Immunohistochemistry analysis of paraffin embedded Human liver cancer tissue using 218579(DCP2 Antibody) at a dilution of 1/80(Cytoplasm).



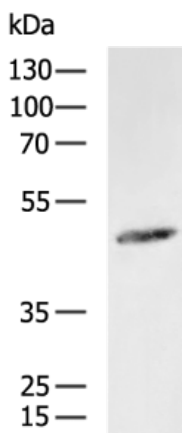
In comparison with the IHC on the left, the same paraffin-embedded Human liver cancer tissue is first treated with the fusion protein and then with 218579(Anti-DCP2 Antibody) at dilution 1/80.



The image on the left is immunohistochemistry of paraffin-embedded Human breast cancer tissue using 218579(Anti-DCP2 Antibody) at a dilution of 1/80.



In comparison with the IHC on the left, the same paraffin-embedded Human breast cancer tissue is first treated with fusion protein and then with D224746(Anti-DCP2 Antibody) at dilution 1/80.



Gel: 8%SDS-PAGE, Lysate: 40 µg;
Lane: Mouse brain tissue lysate;
Primary antibody: 218579(DCP2 Antibody) at dilution 1/1200;
Secondary antibody: HRP-conjugated Goat anti rabbit IgG at 1/5000 dilution;
Exposure time: 1 second



Product Description

Pioneering GTPase and Oncogene Product Development since 2010
