

DCL-1 RABBIT PAB

Cat.#: N225187

Product Name: Anti-DCL-1 Rabbit pAb

Synonyms: DCL-1; CD302; CLEC13A; DCLI; KIAA0022; CD302 antigen; C-type lectin BIMLEC; C-type lectin domain family 13 member A; DEC205-associated C-type lectin I; Type I transmembrane C-type lectin receptor DCL-1; CD302

UNIPROT ID: Q8IX05

Background: Potential multifunctional C-type lectin receptor that may play roles in endocytosis and phagocytosis as well as in cell adhesion and migration.

Immunogen: The antiserum was produced against synthesized peptide derived from the Internal region of human CD302. AA range:81-130

Applications: WB,ELISA

Recommended Dilutions: WB: 1/500-1/1000 ELISA: 1/10000

Host Species: Rabbit

Clonality: Rabbit Polyclonal

Clone ID: -

MW: Calculated MW: 26 kDa; Observed MW: 26 kDa

Isotype: IgG

Purification: Affinity Purified

Species Reactivity: Human

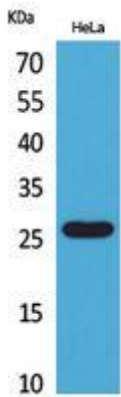
Conjugation: Unconjugated

Modification: Unmodified

Constituents: PBS (without Mg²⁺ and Ca²⁺), pH 7.3 containing 50% glycerol, 0.5% BSA and 0.02% sodium azide

Research Areas: Immunology

Storage & Shipping: Store at -20°C. Avoid repeated freezing and thawing



Western blot analysis of DCL-1 in HeLa lysates using DCL-1 antibody.