

DCAMKL1 RABBIT MAB

Cat.#: N262119

Product Name: Anti-DCAMKL1 Rabbit Monoclonal Antibody

Synonyms: doublecortin-like kinase 1; CL1; DCLK; CLICK1; DCDC3A; DCAMKL1

UNIPROT ID: O15075

Background: Probable kinase that may be involved in a calcium-signaling pathway controlling neuronal migration in the developing brain. May also participate in functions of the mature nervous system.

Immunogen: A synthetic peptide of human DCAMKL1

Applications: WB,IHC-F,IHC-P,ICC/IF

Recommended Dilutions: WB: 1/500-1/1000 IHC: 1/50-1/100 IF: 1/50-1/200

Host Species: Rabbit

Clonality: Rabbit Monoclonal

Clone ID: R05-8D6

MW: Calculated MW: 82 kDa; Observed MW: 82 kDa

Isotype: IgG

Purification: Affinity Purified

Species Reactivity: Human,Mouse,Rat

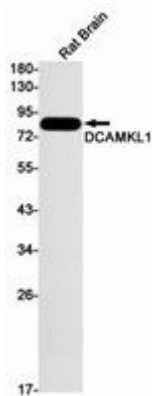
Conjugation: Unconjugated

Modification: Unmodified

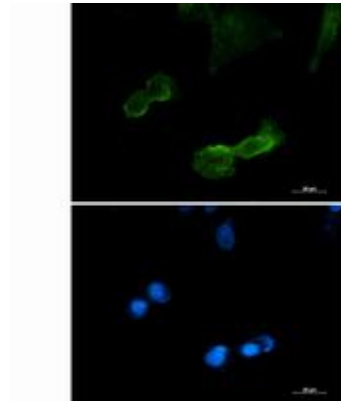
Constituents: PBS (without Mg²⁺ and Ca²⁺), pH 7.3 containing 50% glycerol, 0.5% BSA and 0.02% sodium azide

Research Areas: Neuroscience

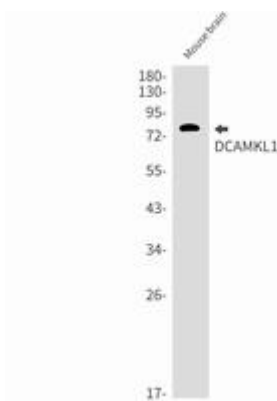
Storage & Shipping: Store at -20°C. Avoid repeated freezing and thawing



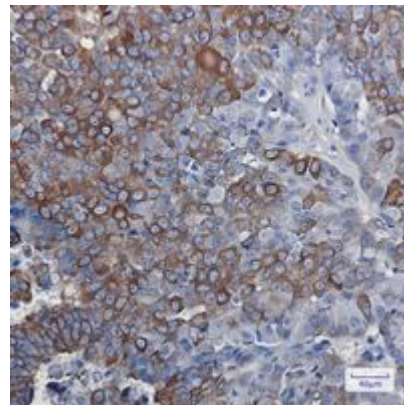
Western blot analysis of DCAMKL1 in rat Brain lysates using DCAMKL1 antibody



Immunocytochemistry analysis of DCAMKL1 (green) in U87-MG using DCAMKL1 antibody, and DAPI (blue).



Western blot analysis of DCAMKL1 in mouse brain lysates using DCAMKL1 antibody.



Immunohistochemistry analysis of paraffin-embedded Human breast cancer using DCAMKL1 antibody. High-pressure and temperature Sodium Citrate pH 6.0 was used for antigen retrieval.