

DCAF6 RABBIT PAB

Cat.#: S220764

Product Name: Anti-DCAF6 Rabbit Polyclonal Antibody

Synonyms: NRIP; ARCAP; IQWD1; PC326; MSTP055; I200006M05Rik

UNIPROT ID: Q58WW2 (Gene Accession - NP_001017977)

Background: NRIP (Nuclear receptor interaction protein), also known as IQWD1 (IQ motif and WD repeat-containing protein 1), MSTP055, ARCAP or PC326, is an 860 amino acid protein that localizes to the nucleus and contains one IQ domain and seven WD-repeats. Expressed in testis, skeletal muscle, prostate and heart, NRIP functions as a ligand-dependent coactivator of nuclear receptors and specifically enhances the transcriptional activity of AR (androgen receptor) and GR (glucocorticoid receptor). NRIP exists as three isoforms that are produced by alternative splicing events.

Immunogen: Synthetic peptide of human DCAF6

Applications: ELISA, IHC

Recommended Dilutions: IHC: 50-200; ELISA: 2000-5000

Host Species: Rabbit

Clonality: Rabbit Polyclonal

Isotype: Immunogen-specific rabbit IgG

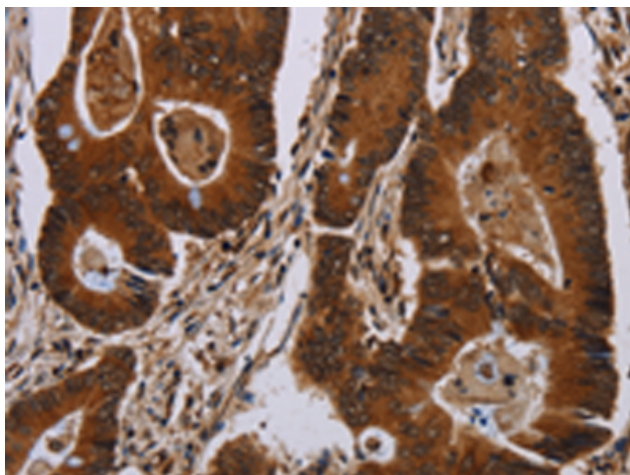
Purification: Antigen affinity purification

Species Reactivity: Human, Mouse

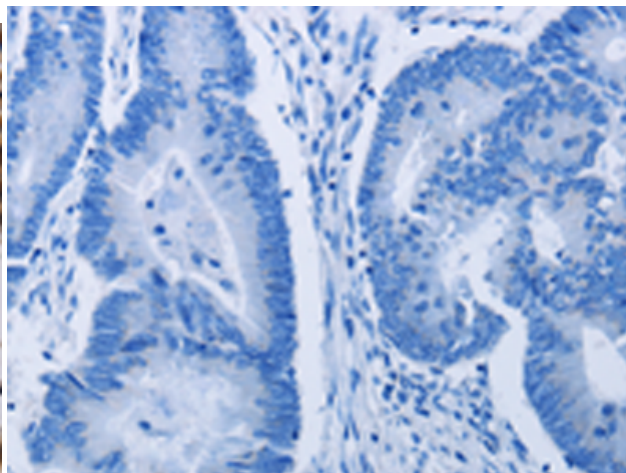
Constituents: PBS (without Mg²⁺ and Ca²⁺), pH 7.4, 150 mM NaCl, 0.05% Sodium Azide and 40% glycerol

Research Areas: Signal Transduction, Epigenetics and Nuclear Signaling

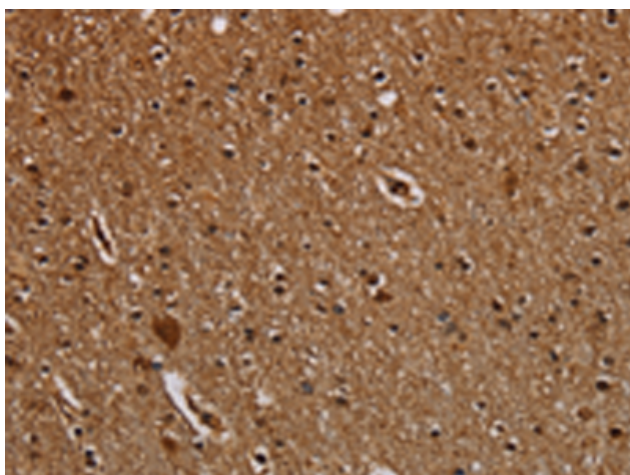
Storage & Shipping: Store at -20°C. Avoid repeated freezing and thawing



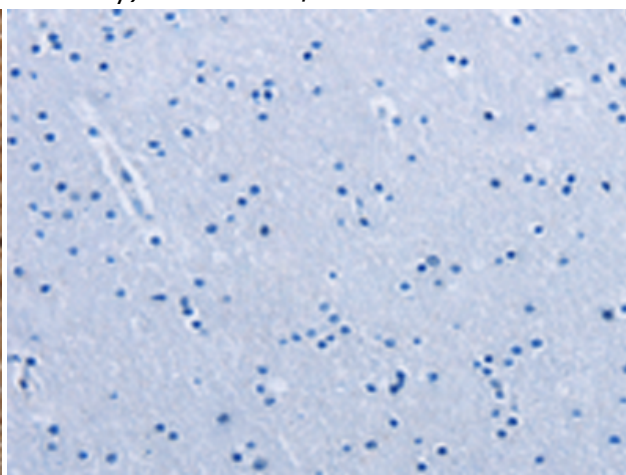
Immunohistochemistry analysis of paraffin embedded Human colon cancer tissue using 220764(DCAF6 Antibody) at a dilution of 1/50(Nucleus or Cytoplasm).



In comparison with the IHC on the left, the same paraffin-embedded Human colon cancer tissue is first treated with the synthetic peptide and then with 220764(Anti-DCAF6 Antibody) at dilution 1/50.



The image on the left is immunohistochemistry of paraffin-embedded Human brain tissue using 220764(Anti-DCAF6 Antibody) at a dilution of 1/50.



In comparison with the IHC on the left, the same paraffin-embedded Human brain tissue is first treated with synthetic peptide and then with D261979(Anti-DCAF6 Antibody) at dilution 1/50.