

DCAF5 RABBIT PAB

Cat.#: S221884

Product Name: Anti-DCAF5 Rabbit Polyclonal Antibody

Synonyms: BCRG2; BCRP2; WDR22; D14S1461E

UNIPROT ID: Q96JK2 (Gene Accession - NP_003852)

Background: May function as a substrate receptor for CUL4-DDB1 E3 ubiquitin-protein ligase complex.

Immunogen: Synthetic peptide of human DCAF5

Applications: ELISA, IHC

Recommended Dilutions: IHC: 20-100; ELISA: 5000-10000

Host Species: Rabbit

Clonality: Rabbit Polyclonal

Isotype: Immunogen-specific rabbit IgG

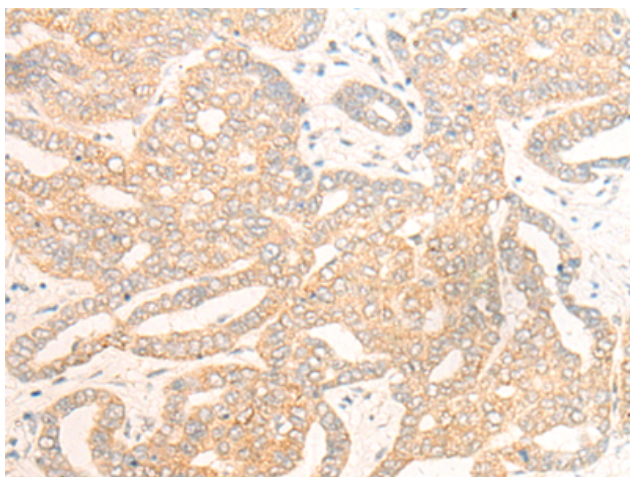
Purification: Antigen affinity purification

Species Reactivity: Human, Mouse

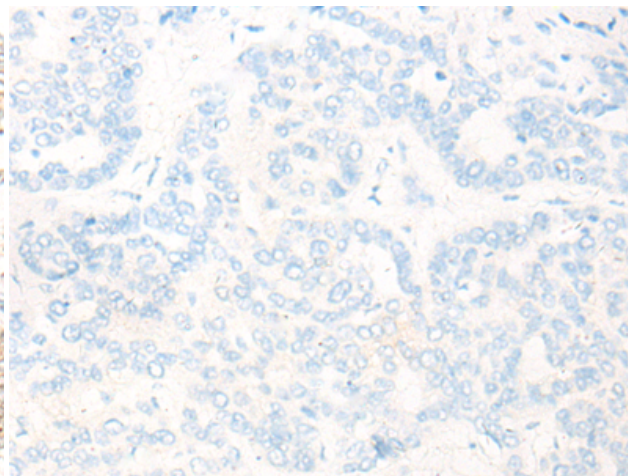
Constituents: PBS (without Mg²⁺ and Ca²⁺), pH 7.4, 150 mM NaCl, 0.05% Sodium Azide and 40% glycerol

Research Areas: Cell Biology

Storage & Shipping: Store at -20°C. Avoid repeated freezing and thawing



Immunohistochemistry analysis of paraffin embedded Human liver cancer tissue using 221884(DCAF5 Antibody) at a dilution of 1/20(Cytoplasm).



In comparison with the IHC on the left, the same paraffin-embedded Human liver cancer tissue is first treated with the synthetic peptide and then with 221884(Anti-DCAF5 Antibody) at dilution 1/20.