

## DAP3 RABBIT PAB

**Cat.#:** S219740

**Product Name:** Anti-Dap3 Rabbit Polyclonal Antibody

**Synonyms:** DAP-3, 4921514D13Rik

**UNIPROT ID:** Q9ER88 (Gene Accession - NP\_075370 )

**Background:** 28S ribosomal protein S29, mitochondrial is a protein that in humans is encoded by the DAP3 gene. Mammalian mitochondrial ribosomal proteins are encoded by nuclear genes and help in protein synthesis within the mitochondrion. Mitochondrial ribosomes (mitoribosomes) consist of a small 28S subunit and a large 39S subunit. This protein potentially binds ATP/GTP and might be a functional partner of the mitoribosomal protein S27. Splice variants that differ in the 5' UTR have been found for this gene; both variants encode the same protein. Pseudogenes corresponding to this gene are found on chromosomes 1q and 2q. DAP3 has been shown to interact with FADD, TNFRSF10A, Glucocorticoid receptor and Heat shock protein 90kDa alpha (cytosolic), member A1.

**Immunogen:** Synthetic peptide of mouse Dap3

**Applications:** ELISA, WB, IHC

**Recommended Dilutions:** IHC: 25-100;WB: 1000-3000;ELISA: 1000-5000

**Host Species:** Rabbit

**Clonality:** Rabbit Polyclonal

**Isotype:** Immunogen-specific rabbit IgG

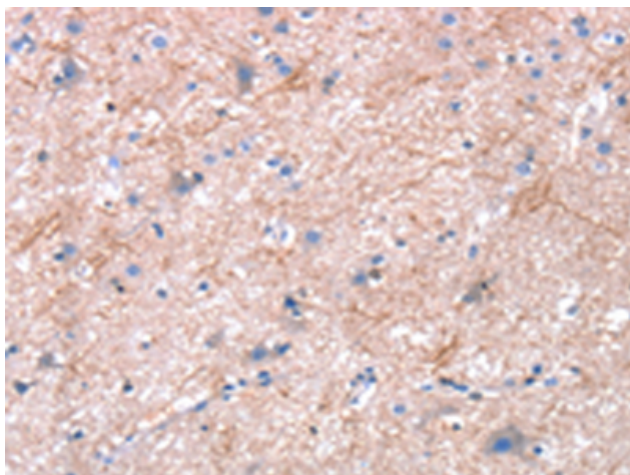
**Purification:** Antigen affinity purification

**Species Reactivity:** Human, Mouse

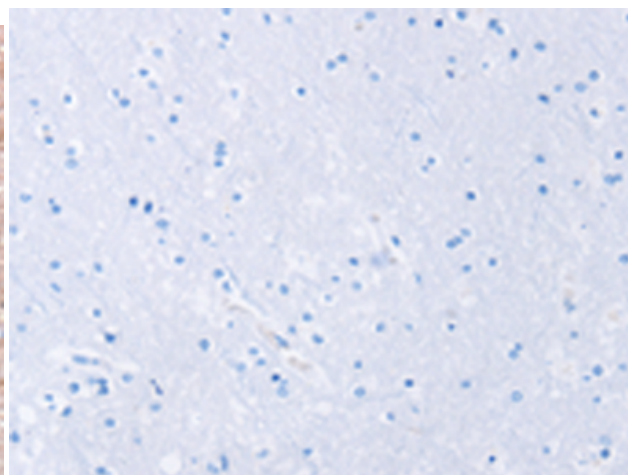
**Constituents:** PBS (without Mg<sup>2+</sup> and Ca<sup>2+</sup>), pH 7.4, 150 mM NaCl, 0.05% Sodium Azide and 40% glycerol

**Research Areas:** Epigenetics and Nuclear Signaling , Cancer

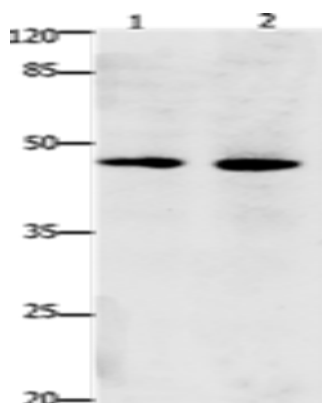
**Storage & Shipping:** Store at -20°C. Avoid repeated freezing and thawing



Immunohistochemistry analysis of paraffin embedded Human brain tissue using 219740(Dap3 Antibody) at a dilution of 1/45(Cytoplasm).



In comparison with the IHC on the left, the same paraffin-embedded Human brain tissue is first treated with the synthetic peptide and then with 219740(Anti-Dap3 Antibody) at dilution 1/45.



Gel: 10%SDS-PAGE, Lysate: 30 µg;  
Lane 1-2: Hepg2 cells, Hela cells;  
Primary antibody: 219740(Dap3 Antibody) at dilution 1/900;  
Secondary antibody: Goat anti rabbit IgG at 1/8000 dilution;  
Exposure time: 1 minute