

## DAPI1 RABBIT MAB

**Cat.#:** N262112

**Product Name:** Anti-DAPI1 Rabbit Monoclonal Antibody

**Synonyms:** Death-associated protein 1; DAP-1

**UNIPROT ID:** P51397

**Background:** Negative regulator of autophagy. Involved in mediating interferon-gamma-induced cell death.

**Immunogen:** A synthetic peptide of human DAPI1

**Applications:** WB,IHC-F,IHC-P,ICC/IF,IP

**Recommended Dilutions:** WB: 1/500-1/1000 IHC: 1/50-1/100 IF: 1/50-1/200 IP: 1/20

**Host Species:** Rabbit

**Clonality:** Rabbit Monoclonal

**Clone ID:** R05-2J5

**MW:** Calculated MW: 11 kDa; Observed MW: 11 kDa

**Isotype:** IgG

**Purification:** Affinity Purified

**Species Reactivity:** Human,Mouse,Rat

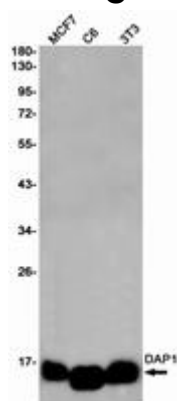
**Conjugation:** Unconjugated

**Modification:** Unmodified

**Constituents:** PBS (without Mg<sup>2+</sup> and Ca<sup>2+</sup>), pH 7.3 containing 50% glycerol, 0.5% BSA and 0.02% sodium azide

**Research Areas:** Cell Biology

**Storage & Shipping:** Store at -20°C. Avoid repeated freezing and thawing



Western blot analysis of DAPI1 in MCF-7, C6, 3T3 lysates using DAPI1 antibody.



# Product Description

Pioneering GTPase and Oncogene Product Development since 2010

---