

## CYYR1 RABBIT PAB

**Cat.#:** S219062

**Product Name:** Anti-CYYR1 Rabbit Polyclonal Antibody

**Synonyms:** C21orf95

**UNIPROT ID:** Q96J86 (Gene Accession - BC036761 )

**Background:** The function of this protein is unknown.

**Immunogen:** Fusion protein of human CYYR1

**Applications:** ELISA, IHC

**Recommended Dilutions:** IHC: 50-300; ELISA: 5000-10000

**Host Species:** Rabbit

**Clonality:** Rabbit Polyclonal

**Isotype:** Immunogen-specific rabbit IgG

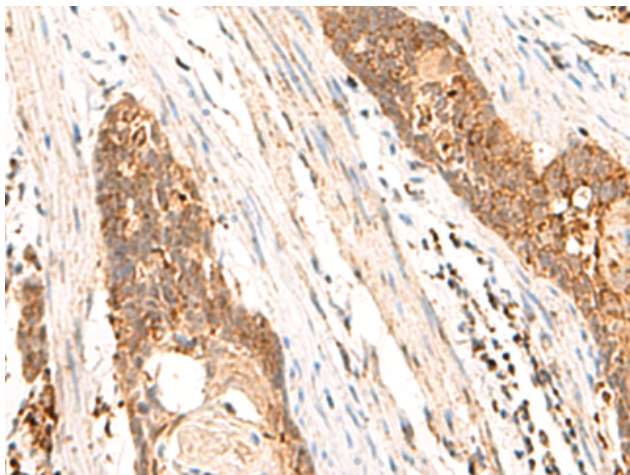
**Purification:** Antigen affinity purification

**Species Reactivity:** Human, Mouse

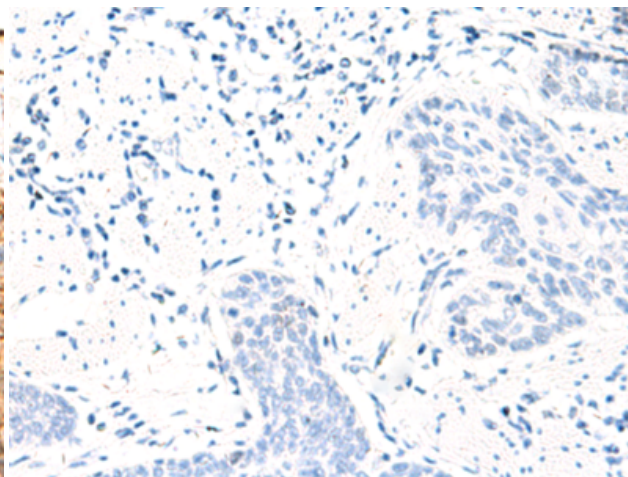
**Constituents:** PBS (without Mg<sup>2+</sup> and Ca<sup>2+</sup>), pH 7.4, 150 mM NaCl, 0.05% Sodium Azide and 40% glycerol

**Research Areas:** Cell Biology

**Storage & Shipping:** Store at -20°C. Avoid repeated freezing and thawing



Immunohistochemistry analysis of paraffin embedded Human esophagus cancer tissue using 219062(CYYR1 Antibody) at a dilution of 1/85(Cytoplasm).



In comparison with the IHC on the left, the same paraffin-embedded Human esophagus cancer tissue is first treated with the fusion protein and then with 219062(Anti-CYYR1 Antibody) at dilution 1/85.