

## CYTOKERATIN RABBIT PAB

**Cat.#:** N225216

**Product Name:** Anti-Cytokeratin Rabbit pAb

**Synonyms:** KRT2A; KRT2E; KRT2B; KRT2P; K6A; KRT6D; K6B; KRTL1; KRT6E; K6IRS1; KB34; KRT6IRS1; K6IRS2; KB35; KRT6; KRT6IRS2; K6IRS3; KB36; KRT6IRS3; K6IRS4; KB37; KRT5C; KRT6IRS4; K6HF; KB18; K6L; KB38; KRT6L; SCL; CYK8; KRTHB4

**UNIPROT**

**ID:** P35908/Q01546/P12035/P13647/P02538/P04259/P48668/Q3SY84/Q14CN4/Q86Y46/Q7RTS7/O95678/Q5XKE5/P08729/P05787/Q9NSB2

**Background:** Probably contributes to terminal cornification. Associated with keratinocyte activation, proliferation and keratinization.

**Immunogen:** Synthetic peptide from human protein at AA range: 150-220

**Applications:** WB,ELISA

**Recommended Dilutions:** WB: 1/500-1/1000 ELISA: 1/10000

**Host Species:** Rabbit

**Clonality:** Rabbit Polyclonal

**Clone ID:** -

**MW:** Calculated MW: 65 kDa; Observed MW: 70 kDa

**Isotype:** IgG

**Purification:** Affinity Purified

**Species Reactivity:** Human,Mouse,Rat

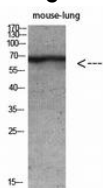
**Conjugation:** Unconjugated

**Modification:** Unmodified

**Constituents:** PBS (without Mg<sup>2+</sup> and Ca<sup>2+</sup>), pH 7.3 containing 50% glycerol, 0.5% BSA and 0.02% sodium azide

**Research Areas:** Signal Transduction

**Storage & Shipping:** Store at -20°C. Avoid repeated freezing and thawing



Western blot analysis of Cytokeratin in mouse lung, mouse brain, mouse kidney, mouse heart lysates using Cytokeratin antibody.