

CYTOKERATIN 8 RABBIT PAB

Cat.#: N225997

Product Name: Anti-Cytokeratin 8 Rabbit pAb

Synonyms: KRT8; CYK8; Keratin; type II cytoskeletal 8; Cytokeratin-8; CK-8; Keratin-8; K8; Type-II keratin Kb8

UNIPROT ID: P05787

Background: Together with KRT19, helps to link the contractile apparatus to dystrophin at the costameres of striated muscle. K8 a type II cytoskeletal keratin. The keratins are intermediate filament proteins responsible for the structural integrity of epithelial cells and are subdivided into cytokeratins and hair keratins.

Immunogen: A synthetic peptide of human Cytokeratin 8

Applications: WB,IHC-F,IHC-P,ICC/IF,FC,IP

Recommended Dilutions: WB: 1/500-1/1000 IHC: 1/50-1/100 IF: 1/50-1/200 IP: 1/20 FC: 1/50-1/100

Host Species: Rabbit

Clonality: Rabbit Polyclonal

Clone ID: -

MW: Calculated MW: 54 kDa; Observed MW: 54 kDa

Isotype: IgG

Purification: Affinity Purified

Species Reactivity: Human,Mouse

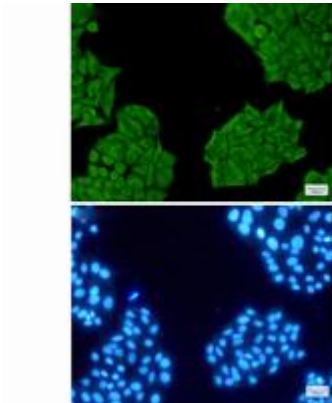
Conjugation: Unconjugated

Modification: Unmodified

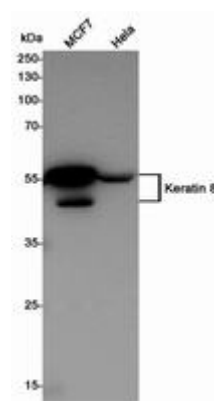
Constituents: PBS (without Mg²⁺ and Ca²⁺), pH 7.3 containing 50% glycerol, 0.5% BSA and 0.02% sodium azide

Research Areas: Signal Transduction

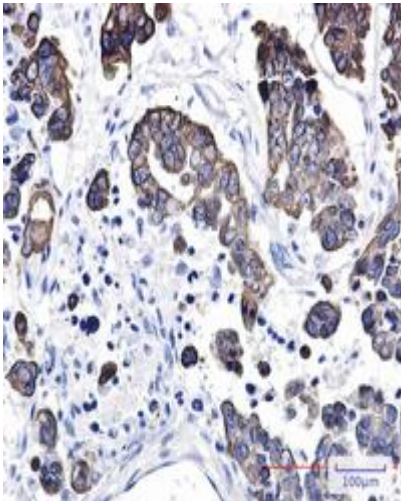
Storage & Shipping: Store at -20°C. Avoid repeated freezing and thawing



Immunocytochemistry analysis of Cytokeratin 8 (green) in HeLa using Cytokeratin 8 antibody, and DAPI (blue)



Western blot analysis of Keratin 8 in MCF-7, HeLa lysates using Cytokeratin 8 antibody.



Immunohistochemistry analysis of paraffin-embedded Human Cholangiocarcinoma using Cytokeratin 8 antibody. High-pressure and temperature Sodium Citrate pH 6.0 was used for antigen retrieval.