

## CYTOKERATIN 18 RABBIT MAB

**Cat.#:** N262105

**Product Name:** Anti-Cytokeratin 18 Rabbit Monoclonal Antibody

**Synonyms:** Cell proliferation inducing gene 46 protein; Cell proliferation inducing protein 46; Cell proliferation-inducing gene 46 protein; CK 18; CK-18; CK18; CYK 18; CYK18; Cytokeratin 18; Cytokeratin endo B; Cytokeratin-18; K 18; K18; K1C18\_HUMAN; Keratin 18; Keratin D; keratin; type I cytoskeletal 18; Keratin-18; KRT18.

**UNIPROT ID:** P05783

**Background:** K18 a type I cytoskeletal keratin. The keratins are intermediate filament proteins responsible for the structural integrity of epithelial cells and are subdivided into cytokeratins and hair keratins. Keratin 18 and its filament partner keratin 8 are perhaps the most commonly found members of the intermediate filament gene family.

**Immunogen:** A synthetic peptide of human Cytokeratin 18

**Applications:** WB,ICC/IF

**Recommended Dilutions:** WB: 1/500-1/1000 IF: 1/50-1/200

**Host Species:** Rabbit

**Clonality:** Rabbit Monoclonal

**Clone ID:** R01-9A3

**MW:** Calculated MW: 48 kDa; Observed MW: 48 kDa

**Isotype:** IgG

**Purification:** Affinity Purified

**Species Reactivity:** Human

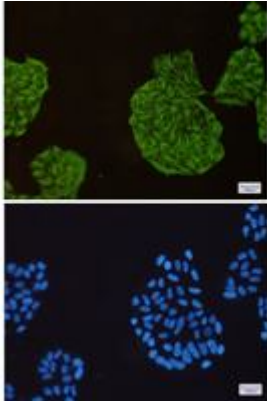
**Conjugation:** Unconjugated

**Modification:** Unmodified

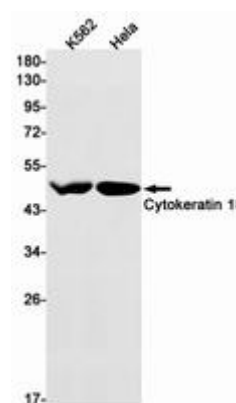
**Constituents:** PBS (without Mg<sup>2+</sup> and Ca<sup>2+</sup>), pH 7.3 containing 50% glycerol, 0.5% BSA and 0.02% sodium azide

**Research Areas:** Tags & Cell Markers

**Storage & Shipping:** Store at -20°C. Avoid repeated freezing and thawing



Immunocytochemistry analysis of Cytokeratin 18 (green) in Hela using Cytokeratin 18 antibody, and DAPI (blue)



Western blot analysis of Cytokeratin 18 in K562, Hela lysates using Cytokeratin 18 antibody.