

CYTOKERATIN 10 RABBIT MAB

Cat.#: N261701

Product Name: Anti-Cytokeratin 10 Rabbit Monoclonal Antibody

Synonyms: KRT10; KPP; Keratin; type I cytoskeletal 10; Cytokeratin-10; CK-10; Keratin-10; K10

UNIPROT ID: P13645

Background: K10 a type I cytoskeletal keratin. The keratins are intermediate filament proteins responsible for the structural integrity of epithelial cells and are subdivided into cytokeratins and hair keratins. There are two types of cytoskeletal and microfibrillar keratin: type I (acidic; 40–55 kDa) [K9 to K20] and type II (neutral to basic; 56–70 kDa) [K1 to K8]. Both a basic and an acidic keratin are required for filament assembly.

Immunogen: A synthetic peptide of human Cytokeratin 10

Applications: WB,IHC-P

Recommended Dilutions: WB: 1/500–1/1000 IHC: 1/50–1/100

Host Species: Rabbit

Clonality: Rabbit Monoclonal

Clone ID: R04-7A8

MW: Calculated MW: 59 kDa; Observed MW: 59 kDa

Isotype: IgG

Purification: Affinity Purified

Species Reactivity: Human,Hamster,Mouse,Rat

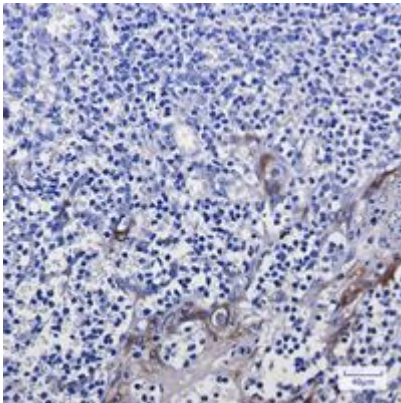
Conjugation: Unconjugated

Modification: Unmodified

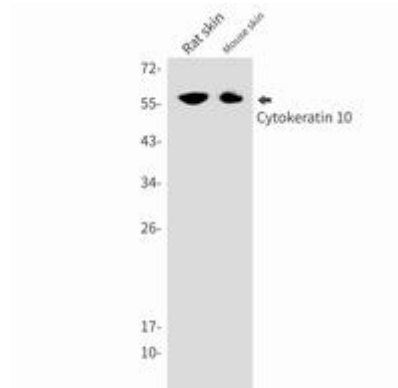
Constituents: PBS (without Mg²⁺ and Ca²⁺), pH 7.3 containing 50% glycerol, 0.5% BSA and 0.02% sodium azide

Research Areas: Cell Biology

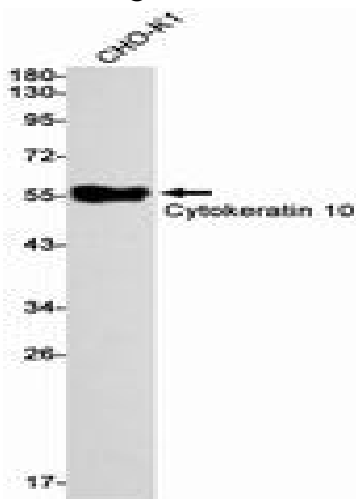
Storage & Shipping: Store at -20°C. Avoid repeated freezing and thawing



Immunohistochemistry analysis of paraffin-embedded Human tonsil using Cytokeratin 10 antibody. High-pressure and temperature Sodium Citrate pH 6.0 was used for antigen retrieval.



Western blot analysis of Cytokeratin 10 in rat skin, mouse skin lysates using Cytokeratin 10 antibody.



Western blot analysis of Cytokeratin 10 in CHO-K1 lysates using Cytokeratin 10 antibody.