

## CYTOCHROME P450 REDUCTASE RABBIT PAB

**Cat.#:** N225965

**Product Name:** Anti-Cytochrome P450 Reductase Rabbit pAb

**Synonyms:** CPR; CYPOR; P450R; por

**UNIPROT ID:** P16435

**Background:** This enzyme is required for electron transfer from NADP to cytochrome P450 in microsomes. It can also provide electron transfer to heme oxygenase and cytochrome B5.

**Immunogen:** A synthesized peptide derived from human Cytochrome P450 Reductase

**Applications:** WB,IHC-P,ICC/IF,FC

**Recommended Dilutions:** WB: 1/500-1/1000 IHC: 1/50-1/100 IF: 1/50-1/200 FC: 1/50-1/100

**Host Species:** Rabbit

**Clonality:** Rabbit Polyclonal

**Clone ID:** -

**MW:** Calculated MW: 77 kDa; Observed MW: 77 kDa

**Isotype:** IgG

**Purification:** Affinity Chromatography

**Species Reactivity:** Human,Mouse,Rat

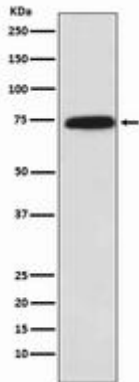
**Conjugation:** Unconjugated

**Modification:** Unmodified

**Constituents:** PBS (without Mg<sup>2+</sup> and Ca<sup>2+</sup>), pH 7.3 containing 50% glycerol, 0.5% BSA and 0.02% sodium azide

**Research Areas:** Cardiovascular

**Storage & Shipping:** Store at -20°C. Avoid repeated freezing and thawing



Western blot analysis of Cytochrome P450 Reductase in A431 lysates using Cytochrome P450 Reductase antibody.