

## CYTOCHROME P450 2D6 RABBIT MAB

**Cat.#:** N263291

**Product Name:** Anti-Cytochrome P450 2D6 Rabbit Monoclonal Antibody

**Synonyms:** CYP2D6; CYP2DL1; Cytochrome P450 2D6; CYP11D6; Cytochrome P450-DB1; Debrisoquine 4-hydroxylase

**UNIPROT ID:** P10635

**Background:** Cytochrome P450 2D6 is a member of the cytochrome P450 superfamily of enzymes. The cytochrome P450 proteins are monooxygenases which catalyze many reactions involved in drug metabolism and synthesis of cholesterol, steroids and other lipids.

**Immunogen:** Recombinant protein of human CYP2D6

**Applications:** WB,IHC-F,IHC-P,ICC/IF

**Recommended Dilutions:** WB: 1/500-1/1000 IHC: 1/50-1/100 IF: 1/50-1/200

**Host Species:** Rabbit

**Clonality:** Rabbit Monoclonal

**Clone ID:** R07-3G8

**MW:** Calculated MW: 56 kDa; Observed MW: 50 kDa

**Isotype:** IgG

**Purification:** Affinity Purified

**Species Reactivity:** Human

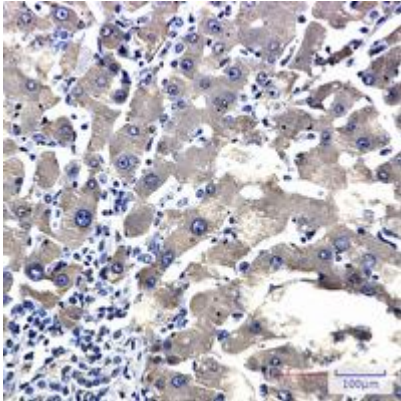
**Conjugation:** Unconjugated

**Modification:** Unmodified

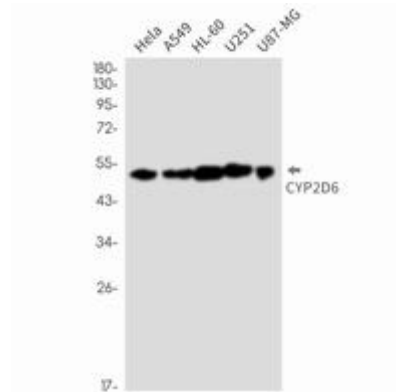
**Constituents:** PBS (without Mg<sup>2+</sup> and Ca<sup>2+</sup>), pH 7.3 containing 50% glycerol, 0.5% BSA and 0.02% sodium azide

**Research Areas:** Cardiovascular

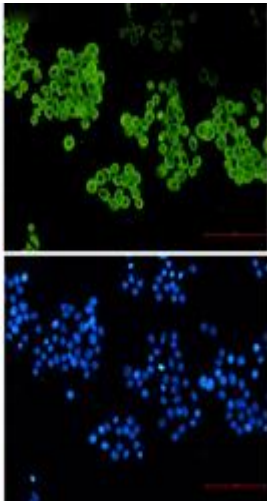
**Storage & Shipping:** Store at -20°C. Avoid repeated freezing and thawing



Immunohistochemistry analysis of paraffin-embedded liver cancer using CYP2D6 antibody. High-pressure and temperature Sodium Citrate pH 6.0 was used for antigen retrieval.



Western blot analysis of CYP2D6 in HeLa, A549, HL-60, U251, U87-MG lysates using Cytochrome P450 2D6 antibody.



Immunocytochemistry analysis of CYP2D6 (green) in HeLa using CYP2D6 antibody, and DAPI (blue)