

## CYTOCHROME P450 1B1 RABBIT MAB

**Cat.#:** N262097

**Product Name:** Anti-Cytochrome P450 1B1 Rabbit Monoclonal Antibody

**Synonyms:** CYP1B1; Cytochrome P450 1B1; CYP1B1

**UNIPROT ID:** Q16678

**Background:** Cytochromes P450 are a group of heme-thiolate monooxygenases. In liver microsomes, this enzyme is involved in an NADPH-dependent electron transport pathway. It oxidizes a variety of structurally unrelated compounds, including steroids, fatty acids, and xenobiotics.

**Immunogen:** Recombinant protein of human CYP1B1

**Applications:** WB,IHC-P

**Recommended Dilutions:** WB: 1/500-1/1000 IHC: 1/50-1/100

**Host Species:** Rabbit

**Clonality:** Rabbit Monoclonal

**Clone ID:** R02-5A3

**MW:** Calculated MW: 61 kDa; Observed MW: 61 kDa

**Isotype:** IgG

**Purification:** Affinity Purified

**Species Reactivity:** Human,Rat

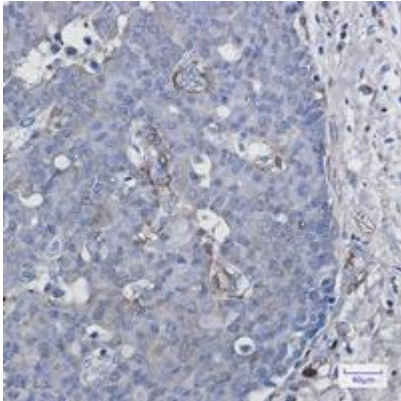
**Conjugation:** Unconjugated

**Modification:** Unmodified

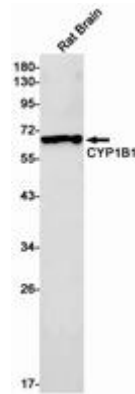
**Constituents:** PBS (without Mg<sup>2+</sup> and Ca<sup>2+</sup>), pH 7.3 containing 50% glycerol, 0.5% BSA and 0.02% sodium azide

**Research Areas:** Cardiovascular

**Storage & Shipping:** Store at -20°C. Avoid repeated freezing and thawing



Immunohistochemistry analysis of paraffin-embedded Human breast cancer using CYP1B1 antibody. High-pressure and temperature Sodium Citrate pH 6.0 was used for antigen retrieval.



Western blot analysis of CYP1B1 in rat Brain lysates using Cytochrome P450 1B1 antibody.