

CYTOCHROME P450 17A1 RABBIT MAB

Cat.#: N262101

Product Name: Anti-Cytochrome P450 17A1 Rabbit Monoclonal Antibody

Synonyms: CPT7; CYP17; P450C17; S17AH; CYP17A1

UNIPROT ID: P05093

Background: Conversion of pregnenolone and progesterone to their 17-alpha-hydroxylated products and subsequently to dehydroepiandrosterone (DHEA) and androstenedione.

Immunogen: A synthetic peptide of human Cytochrome P450 17A1

Applications: WB,IHC-F,IHC-P,ICC/IF,IP

Recommended Dilutions: WB: 1/500-1/1000 IHC: 1/50-1/100 IF: 1/50-1/200 IP: 1/20

Host Species: Rabbit

Clonality: Rabbit Monoclonal

Clone ID: R08-2J5

MW: Calculated MW: 57 kDa; Observed MW: 57 kDa

Isotype: IgG

Purification: Affinity Purified

Species Reactivity: Human,Mouse,Rat

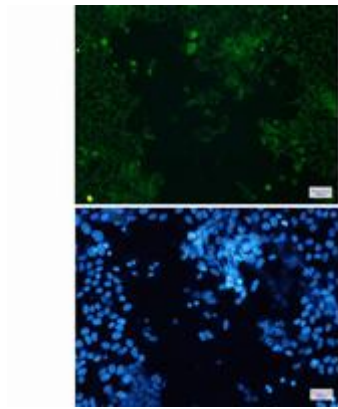
Conjugation: Unconjugated

Modification: Unmodified

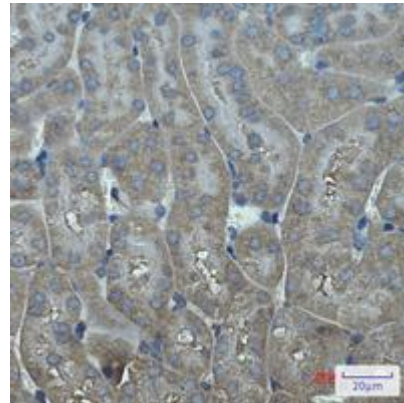
Constituents: PBS (without Mg²⁺ and Ca²⁺), pH 7.3 containing 50% glycerol, 0.5% BSA and 0.02% sodium azide

Research Areas: Cardiovascular

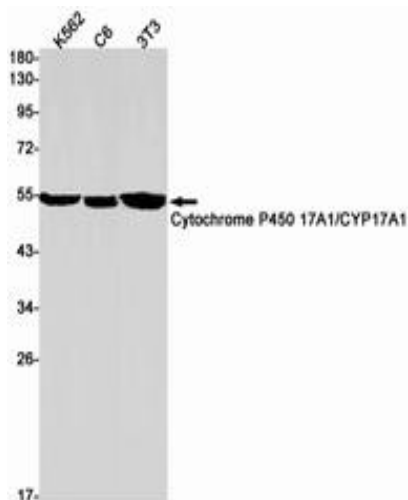
Storage & Shipping: Store at -20°C. Avoid repeated freezing and thawing



Immunocytochemistry analysis of Cytochrome P450 17A1 (green) in HeLa cells using Cytochrome P450 17A1 antibody, and DAPI (blue)



Immunohistochemistry analysis of paraffin-embedded mouse kidney using Cytochrome P450 17A1 antibody. High-pressure and temperature Sodium Citrate pH 6.0 was used for antigen retrieval.



Western blot analysis of Cytochrome P450 17A1/CYP17A1 in K562, C6, 3T3 lysates using Cytochrome P450 17A1/CYP17A1 antibody.