

CYTOCHROME C OXIDASE SUBUNIT VIC RABBIT MAB

Cat.#: N262099

Product Name: Anti-Cytochrome C Oxidase subunit Vic Rabbit Monoclonal Antibody

Synonyms: cytochrome c oxidase subunit 6C

UNIPROT ID: P09669

Background: This protein is one of the nuclear-coded polypeptide chains of cytochrome c oxidase, the terminal oxidase in mitochondrial electron transport.

Immunogen: A synthetic peptide of human Cytochrome C Oxidase subunit Vic

Applications: WB,IHC-P

Recommended Dilutions: WB: 1/500-1/1000 IHC: 1/50-1/100

Host Species: Rabbit

Clonality: Rabbit Monoclonal

Clone ID: R06-1D9

MW: Calculated MW: 9 kDa; Observed MW: 12 kDa

Isotype: IgG

Purification: Affinity Purified

Species Reactivity: Human,Mouse,Rat

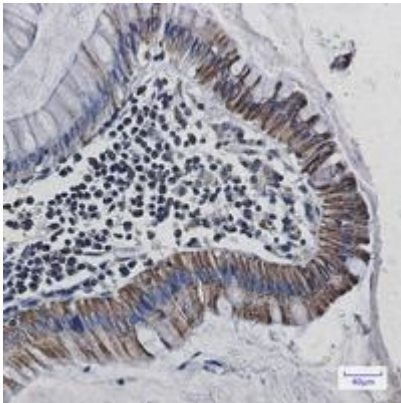
Conjugation: Unconjugated

Modification: Unmodified

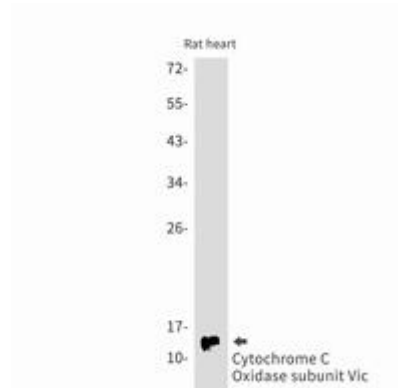
Constituents: PBS (without Mg²⁺ and Ca²⁺), pH 7.3 containing 50% glycerol, 0.5% BSA and 0.02% sodium azide

Research Areas: Cardiovascular

Storage & Shipping: Store at -20°C. Avoid repeated freezing and thawing



Immunohistochemistry analysis of paraffin-embedded Human colon cancer using Cytochrome C Oxidase subunit Vic antibody. High-pressure and temperature Sodium Citrate pH 6.0 was used for antigen retrieval.



Western blot analysis of Cytochrome C Oxidase subunit Vic in rat heart lysates using Cytochrome C Oxidase subunit Vic antibody.



Western blot analysis of Cytochrome C Oxidase subunit Vic in 3T3, Hela lysates using Cytochrome C Oxidase subunit Vic antibody.