

## CYTOCHROME C (7C10) MOUSE MAB

**Cat.#:** N261266

**Product Name:** Anti-Cytochrome C (7C10) Mouse Monoclonal Antibody

**Synonyms:** CYCS; CYC; Cytochrome c

**UNIPROT ID:** P99999

**Background:** CYCS Electron carrier protein. The oxidized form of the cytochrome c heme group can accept an electron from the heme group of the cytochrome c1 subunit of cytochrome reductase. Cytochrome c then transfers this electron to the cytochrome oxidase complex, the final protein carrier in the mitochondrial electron-transport chain.

**Immunogen:** Recombinant Protein of CYCS

**Applications:** WB,IHC-F,IHC-P,ICC/IF

**Recommended Dilutions:** WB: 1/500-1/1000 IHC: 1/50-1/100 IF: 1/50-1/200

**Host Species:** Mouse

**Clonality:** Mouse Monoclonal

**Clone ID:** 7C10-3H3-9A3

**MW:** Calculated MW: 12 kDa; Observed MW: 12 kDa

**Isotype:** IgG1

**Purification:** Affinity Purified

**Species Reactivity:** Human,Mouse,Rat,Chicken

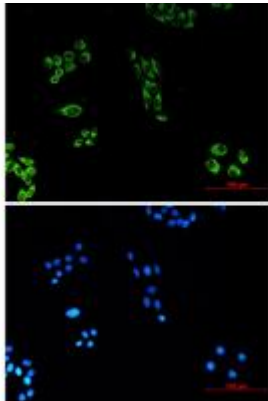
**Conjugation:** Unconjugated

**Modification:** Unmodified

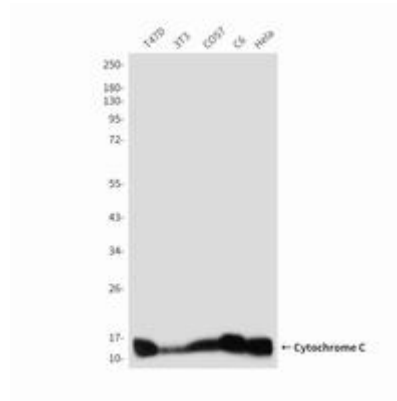
**Constituents:** PBS (without Mg<sup>2+</sup> and Ca<sup>2+</sup>), pH 7.3 containing 50% glycerol, 0.5% BSA and 0.02% sodium azide

**Research Areas:** Cardiovascular

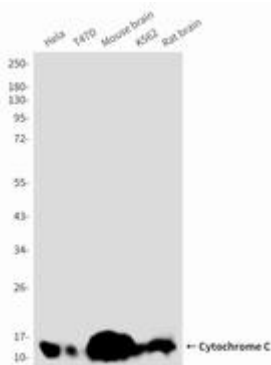
**Storage & Shipping:** Store at -20°C. Avoid repeated freezing and thawing



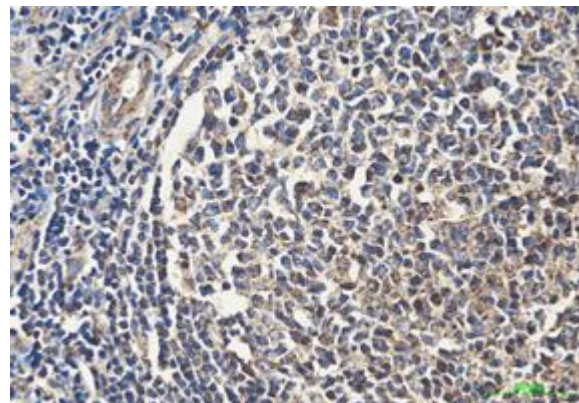
Immunocytochemistry analysis of Cytochrome C (7C1) (green) in HeLa using Cytochrome C (7C1) antibody, and DAPI (blue)



Western blot analysis of Cytochrome c in T47D, 3T3, COS7, C6 and HeLa lysates using Cytochrome c antibody.



Western blot analysis of Cytochrome C (7C10) in HeLa, T47D, mouse brain, K562, rat brain lysates using Cytochrome C (7C10) antibody.



Immunohistochemistry analysis of paraffin-embedded human tonsil tissue using Cytochrome C (7C10) antibody. High-pressure and temperature Sodium Citrate pH 6.0 was used for antigen retrieval.