

## CYSTATIN B RABBIT MAB

**Cat.#:** N263293

**Product Name:** Anti-Cystatin B Rabbit Monoclonal Antibody

**Synonyms:** CSTB; CST6; STFB; Cystatin-B; CPI-B; Liver thiol proteinase inhibitor; Stefin-B

**UNIPROT ID:** P04080

**Background:** This is an intracellular thiol proteinase inhibitor.

**Immunogen:** A synthetic peptide of human Cystatin-B

**Applications:** WB,IHC-P

**Recommended Dilutions:** WB: 1/500-1/1000 IHC: 1/50-1/100

**Host Species:** Rabbit

**Clonality:** Rabbit Monoclonal

**Clone ID:** R02-7D7

**MW:** Calculated MW: 11 kDa; Observed MW: 11 kDa

**Isotype:** IgG

**Purification:** Affinity Purified

**Species Reactivity:** Human,Rat

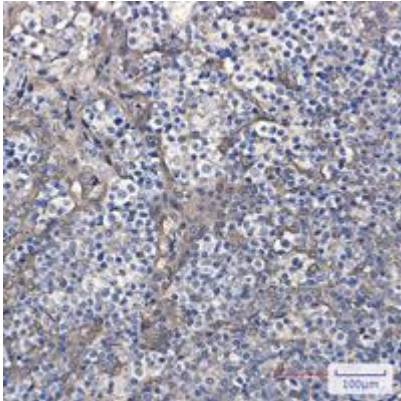
**Conjugation:** Unconjugated

**Modification:** Unmodified

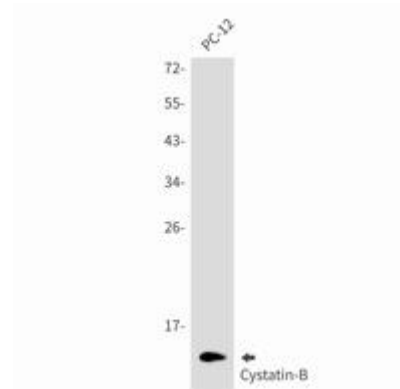
**Constituents:** PBS (without Mg<sup>2+</sup> and Ca<sup>2+</sup>), pH 7.3 containing 50% glycerol, 0.5% BSA and 0.02% sodium azide

**Research Areas:** Cell Biology

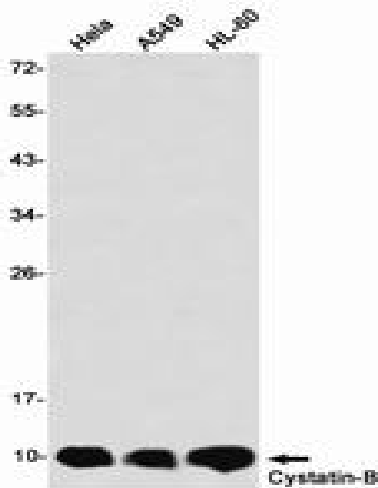
**Storage & Shipping:** Store at -20°C. Avoid repeated freezing and thawing



Immunohistochemistry analysis of paraffin-embedded Human tonsil using CystatinB antibody. High-pressure and temperature Sodium Citrate pH 6.0 was used for antigen retrieval.



Western blot analysis of CystatinB in PC-12 lysates using Cystatin B antibody.



Western blot analysis of CystatinB in HeLa, A549, HL-60 lysates using CystatinB antibody.