

CYSTATHIONASE RABBIT MAB

Cat.#: N263292

Product Name: Anti-Cystathionase Rabbit Monoclonal Antibody

Synonyms: CTH; Cystathionine gamma lyase; Cysteine desulfhydrase; Gamma cystathionase; Homoserine deaminase

UNIPROT ID: P32929

Background: Catalyzes the last step in the transsulfuration pathway from methionine to cysteine. Has broad substrate specificity. Converts cystathionine to cysteine, ammonia and 2-oxobutanoate.

Immunogen: A synthetic peptide of human Cystathionase/CTH

Applications: WB,IP

Recommended Dilutions: WB: 1/500-1/1000 IP: 1/20

Host Species: Rabbit

Clonality: Rabbit Monoclonal

Clone ID: R06-5A5

MW: Calculated MW: 45 kDa; Observed MW: 45 kDa

Isotype: IgG

Purification: Affinity Purified

Species Reactivity: Human

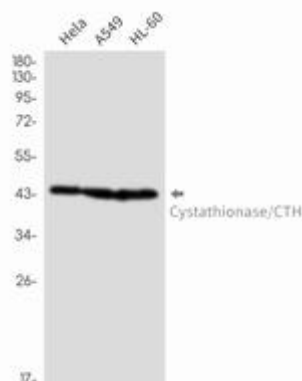
Conjugation: Unconjugated

Modification: Unmodified

Constituents: PBS (without Mg²⁺ and Ca²⁺), pH 7.3 containing 50% glycerol, 0.5% BSA and 0.02% sodium azide

Research Areas: Signal Transduction

Storage & Shipping: Store at -20°C. Avoid repeated freezing and thawing



Western blot analysis of Cystathionase/CTH in HeLa, A549, HL-60 lysates using Cystathionase antibody.



Product Description

Pioneering GTPase and Oncogene Product Development since 2010
