

CYP3A5 RABBIT PAB

Cat.#: S221875

Product Name: Anti-CYP3A5 Rabbit Polyclonal Antibody

Synonyms: CP35; PCN3; CYP11A5; P450PCN3

UNIPROT ID: P20815 (Gene Accession - NP_000768)

Background: This gene encodes a member of the cytochrome P450 superfamily of enzymes. The cytochrome P450 proteins are monooxygenases which catalyze many reactions involved in drug metabolism and synthesis of cholesterol, steroids and other lipids. The encoded protein metabolizes drugs as well as the steroid hormones testosterone and progesterone. This gene is part of a cluster of cytochrome P450 genes on chromosome 7q21.1. Two pseudogenes of this gene have been identified within this cluster on chromosome 7. Expression of this gene is widely variable among populations, and a single nucleotide polymorphism that affects transcript splicing has been associated with susceptibility to hypertension. Alternative splicing results in multiple transcript variants.

Immunogen: Synthetic peptide of human CYP3A5

Applications: ELISA, WB, IHC

Recommended Dilutions: IHC: 25-100;WB: 200-1000;ELISA: 5000-10000

Host Species: Rabbit

Clonality: Rabbit Polyclonal

Isotype: Immunogen-specific rabbit IgG

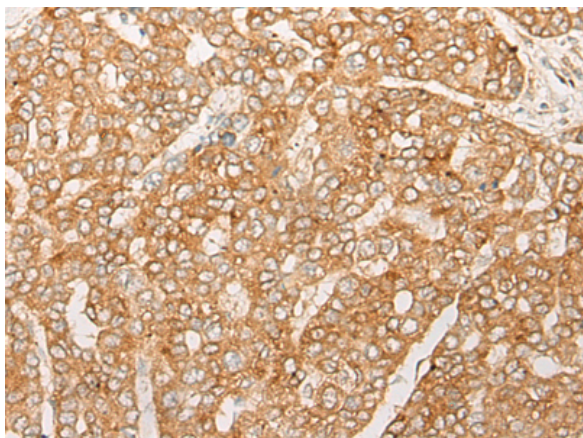
Purification: Antigen affinity purification

Species Reactivity: Human

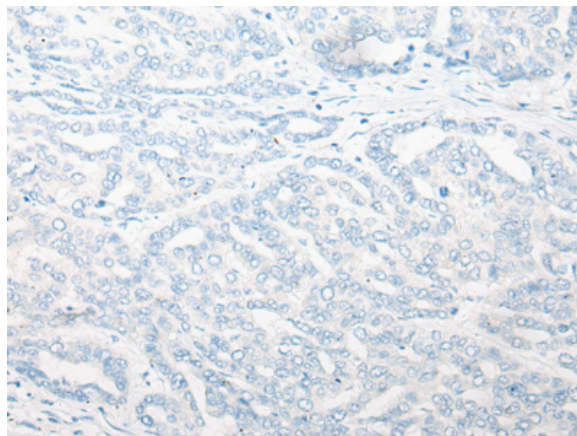
Constituents: PBS (without Mg²⁺ and Ca²⁺), pH 7.4, 150 mM NaCl, 0.05% Sodium Azide and 40% glycerol

Research Areas: Metabolism, Signal Transduction, Cardiovascular

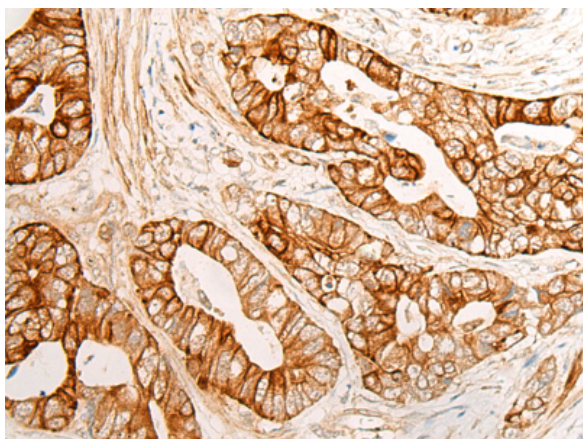
Storage & Shipping: Store at -20°C. Avoid repeated freezing and thawing



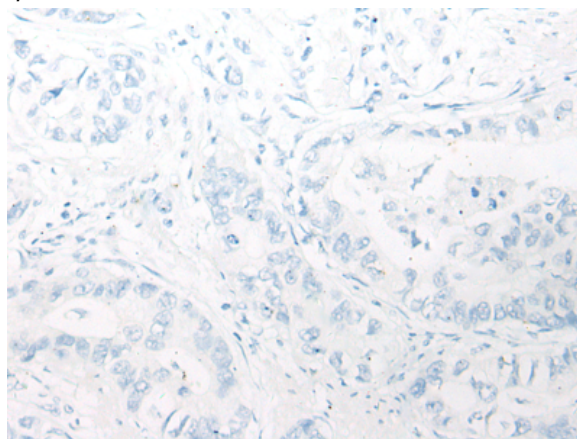
Immunohistochemistry analysis of paraffin embedded Human liver cancer tissue using 221875(CYP3A5 Antibody) at a dilution of 1/20(Cell membrane).



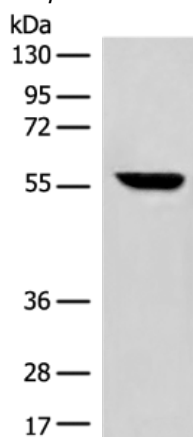
In comparison with the IHC on the left, the same paraffin-embedded Human liver cancer tissue is first treated with the synthetic peptide and then with 221875(Anti-CYP3A5 Antibody) at dilution 1/20.



The image on the left is immunohistochemistry of paraffin-embedded Human gastric cancer tissue using 221875(Anti-CYP3A5 Antibody) at a dilution of 1/20.



In comparison with the IHC on the left, the same paraffin-embedded Human gastric cancer tissue is first treated with synthetic peptide and then with D263664(Anti-CYP3A5 Antibody) at dilution 1/20.



Gel: 8%SDS-PAGE, Lysate: 40 µg;
Lane: HEPG2 cell lysate;
Primary antibody: 221875(CYP3A5 Antibody) at dilution 1/300;
Secondary antibody: Goat anti rabbit IgG at 1/8000 dilution;
Exposure time: 7 seconds



Product Description

Pioneering GTPase and Oncogene Product Development since 2010
