

## CYP24A1 RABBIT PAB

**Cat.#:** S222354

**Product Name:** Anti-CYP24A1 Rabbit Polyclonal Antibody

**Synonyms:** CP24; HCAI; CYP24; HCINF1; P450-CC24

**UNIPROT ID:** Q07973 (Gene Accession - NP\_000773 )

**Background:** This gene encodes a member of the cytochrome P450 superfamily of enzymes. The cytochrome P450 proteins are monooxygenases which catalyze many reactions involved in drug metabolism and synthesis of cholesterol, steroids and other lipids. This mitochondrial protein initiates the degradation of 1,25-dihydroxyvitamin D<sub>3</sub>, the physiologically active form of vitamin D<sub>3</sub>, by hydroxylation of the side chain. In regulating the level of vitamin D<sub>3</sub>, this enzyme plays a role in calcium homeostasis and the vitamin D endocrine system. Alternatively spliced transcript variants encoding different isoforms have been found for this gene.

**Immunogen:** Synthetic peptide of human CYP24A1

**Applications:** ELISA, IHC

**Recommended Dilutions:** IHC: 50-200; ELISA: 5000-10000

**Host Species:** Rabbit

**Clonality:** Rabbit Polyclonal

**Isotype:** Immunogen-specific rabbit IgG

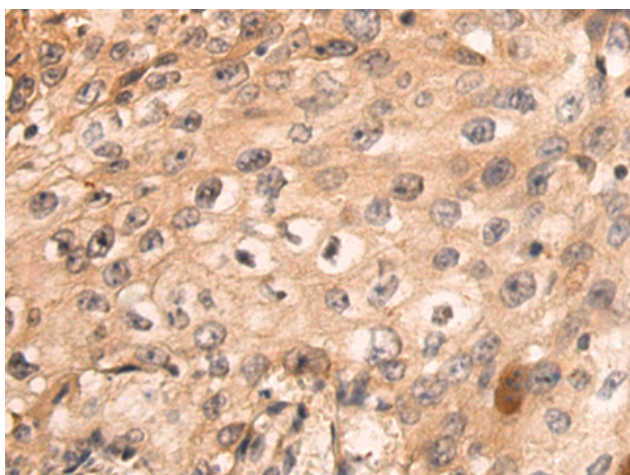
**Purification:** Antigen affinity purification

**Species Reactivity:** Human, Rat

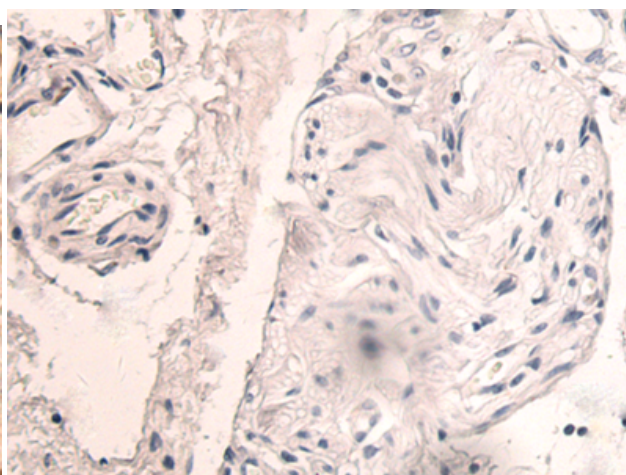
**Constituents:** PBS (without Mg<sup>2+</sup> and Ca<sup>2+</sup>), pH 7.4, 150 mM NaCl, 0.05% Sodium Azide and 40% glycerol

**Research Areas:** Cardiovascular, Metabolism, Cancer

**Storage & Shipping:** Store at -20°C. Avoid repeated freezing and thawing



Immunohistochemistry analysis of paraffin embedded Human esophagus cancer tissue using 222354(CYP24A1 Antibody) at a dilution of 1/60(Mitochondrion).



In comparison with the IHC on the left, the same paraffin-embedded Human esophagus cancer tissue is first treated with the synthetic peptide and then with 222354(Anti-CYP24A1 Antibody) at dilution 1/60.