

## CYFIP2 RABBIT PAB

**Cat.#:** S211080

**Product Name:** Anti-CYFIP2 Rabbit Polyclonal Antibody

**Synonyms:** PIR121

**UNIPROT ID:** Q96F07 (Gene Accession - BC011762)

**Background:** CYFIP2 (Cytoplasmic FMRI-interacting protein 2, p53-inducible protein 121) is a 1,278 amino acid protein encoded by the human gene CYFIP2. CYFIP2 belongs to the CYFIP family and is involved in T-cell adhesion and p53-dependent induction of apoptosis. It interacts with FMRI, FXR1 and FXR2 and is a component of the WAVE1 complex composed of Abi-2, CYFIP2, C3orf10/HSPC300, NAPI25 and WASF1/WAVE1. Upon binding to activated Rac 1, CYFIP2 causes the complex to dissociate, releasing activated WASF1. The CYFIP2 promoter contains a p53-responsive element that confers p53 binding as well as transcriptional activation of a heterologous reporter. Induced expression of CYFIP2 is sufficient for caspase activation and cellular apoptosis, reminiscent of p53 activation.

**Immunogen:** Fusion protein of human CYFIP2

**Applications:** ELISA, WB, IHC

**Recommended Dilutions:** IHC: 50-200;WB: 500-2000;ELISA: 2000-5000

**Host Species:** Rabbit

**Clonality:** Rabbit Polyclonal

**Isotype:** Immunogen-specific rabbit IgG

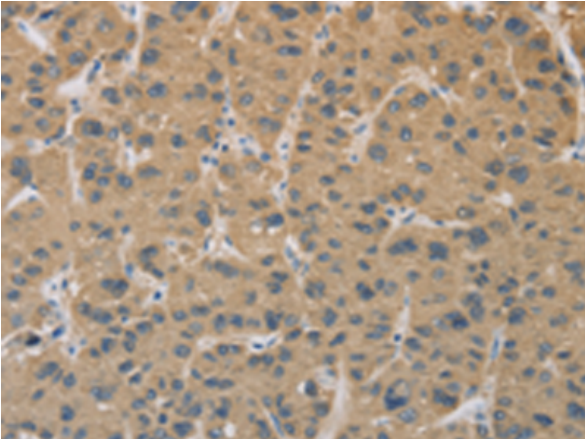
**Purification:** Antigen affinity purification

**Species Reactivity:** Human, Mouse

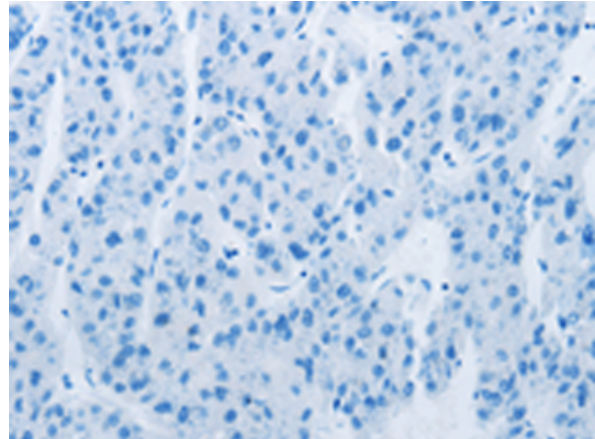
**Constituents:** PBS (without Mg<sup>2+</sup> and Ca<sup>2+</sup>), pH 7.4, 150 mM NaCl, 0.05% Sodium Azide and 40% glycerol

**Research Areas:** Cancer, Neuroscience, Immunology

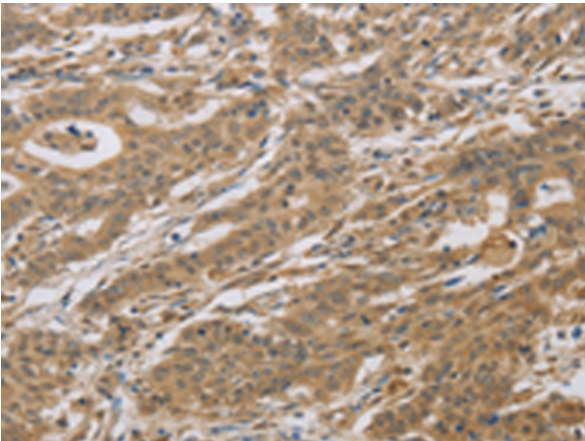
**Storage & Shipping:** Store at -20°C. Avoid repeated freezing and thawing



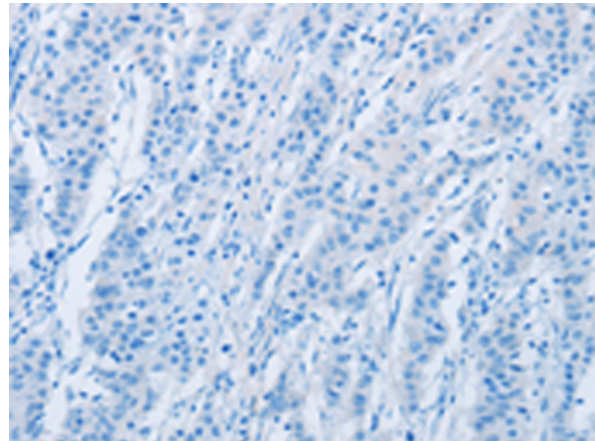
Immunohistochemistry analysis of paraffin embedded Human liver cancer tissue using 211080(CYFIP2 Antibody) at a dilution of 1/25(Cytoplasm).



In comparison with the IHC on the left, the same paraffin-embedded Human liver cancer tissue is first treated with the fusion protein and then with 211080(Anti-CYFIP2 Antibody) at dilution 1/25.



The image on the left is immunohistochemistry of paraffin-embedded Human gastric cancer tissue using 211080(Anti-CYFIP2 Antibody) at a dilution of 1/25.



In comparison with the IHC on the left, the same paraffin-embedded Human gastric cancer tissue is first treated with fusion protein and then with D122175(Anti-CYFIP2 Antibody) at dilution 1/25.



Gel: 6%SDS-PAGE, Lysate: 40 µg;  
Lane 1-2: Mouse brain tissue, human fetal brain tissue;  
Primary antibody: 211080(CYFIP2 Antibody) at dilution 1/300;  
Secondary antibody: Goat anti rabbit IgG at 1/8000 dilution;  
Exposure time: 2 minutes



# Product Description

Pioneering GTPase and Oncogene Product Development since 2010

---