

## CYCS RABBIT PAB

**Cat.#:** S216463

**Product Name:** Anti-CYCS Rabbit Polyclonal Antibody

**Synonyms:** CYC; HCS; THC4

**UNIPROT ID:** P99999 (Gene Accession - BC015130 )

**Background:** This gene encodes a small heme protein that functions as a central component of the electron transport chain in mitochondria. The encoded protein associates with the inner membrane of the mitochondrion where it accepts electrons from cytochrome b and transfers them to the cytochrome oxidase complex. This protein is also involved in initiation of apoptosis. Mutations in this gene are associated with autosomal dominant nonsyndromic thrombocytopenia. Numerous processed pseudogenes of this gene are found throughout the human genome.

**Immunogen:** Fusion protein of human CYCS

**Applications:** ELISA, WB, IHC

**Recommended Dilutions:** IHC: 100-300;WB: 500-2000;ELISA: 2000-10000

**Host Species:** Rabbit

**Clonality:** Rabbit Polyclonal

**Isotype:** Immunogen-specific rabbit IgG

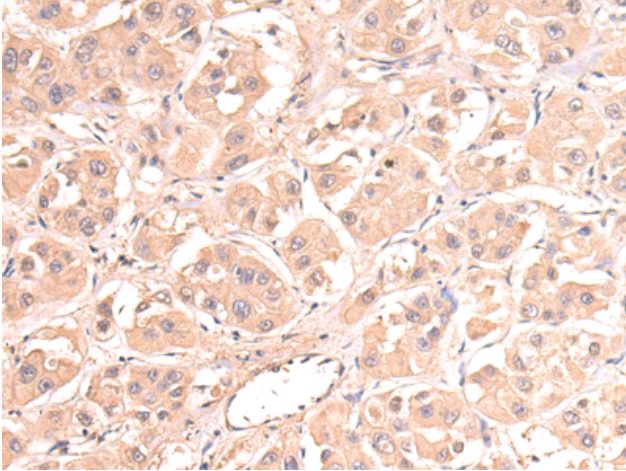
**Purification:** Antigen affinity purification

**Species Reactivity:** Human, Mouse, Rat

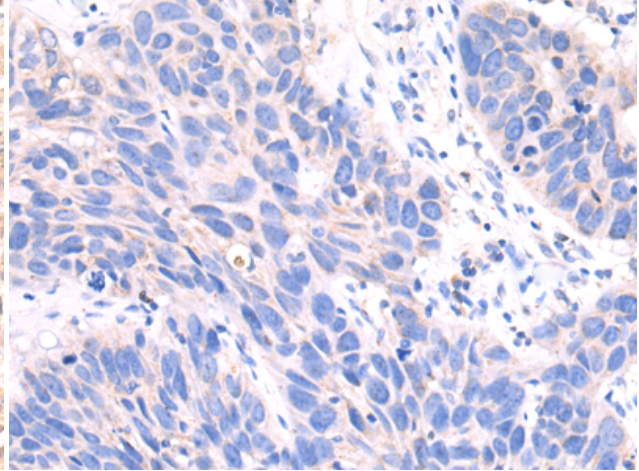
**Constituents:** PBS (without Mg<sup>2+</sup> and Ca<sup>2+</sup>), pH 7.4, 150 mM NaCl, 0.05% Sodium Azide and 40% glycerol

**Research Areas:** Metabolism, Cancer, Cardiovascular

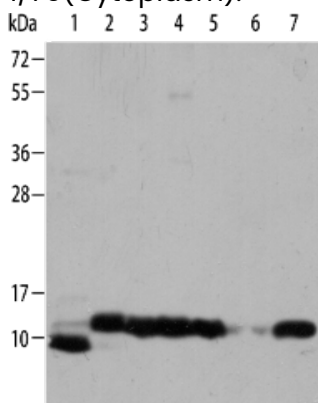
**Storage & Shipping:** Store at -20°C. Avoid repeated freezing and thawing



Immunohistochemistry analysis of paraffin-embedded Human colon cancer tissue using 216463(CYCS Antibody) at a dilution of 1/70(Cytoplasm).



Immunohistochemistry analysis of paraffin-embedded Human gastric cancer tissue using 216463(Anti-CYCS Antibody) at a dilution of 1/70.



Gel: 8%SDS-PAGE, Lysate: 40  $\mu$ g;  
Lane 1-7: Hela cells, K562 cells, mouse brain tissue, Mouse heart tissue, Mouse kidney tissue, PC3 cells, Jurkat cells;  
Primary antibody: 216463(CYCS Antibody) at dilution 1/700;  
Secondary antibody: Goat anti rabbit IgG at 1/8000 dilution;  
Exposure time: 5 seconds