

## CYCLIN T1 RABBIT MAB

**Cat.#:** N262093

**Product Name:** Anti-Cyclin T1 Rabbit Monoclonal Antibody

**Synonyms:** CCNT; CYCT1; HIVE1

**UNIPROT ID:** O60563

**Background:** Regulatory subunit of the cyclin-dependent kinase pair (CDK9/cyclin-T1) complex, also called positive transcription elongation factor B (P-TEFb), which is proposed to facilitate the transition from abortive to productive elongation by phosphorylating the CTD (carboxy-terminal domain) of the large subunit of RNA polymerase II (RNA Pol II).

**Immunogen:** Recombinant protein of human Cyclin T1

**Applications:** WB,IHC-F,IHC-P,ICC/IF,IP

**Recommended Dilutions:** WB: 1/500-1/1000 IHC: 1/50-1/100 IF: 1/50-1/200 IP: 1/20

**Host Species:** Rabbit

**Clonality:** Rabbit Monoclonal

**Clone ID:** R04-1G1

**MW:** Calculated MW: 81 kDa; Observed MW: 81 kDa

**Isotype:** IgG

**Purification:** Affinity Purified

**Species Reactivity:** Human,Mouse,Rat

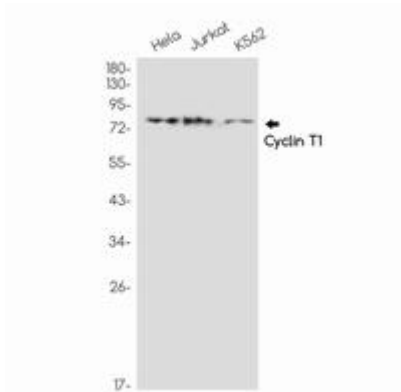
**Conjugation:** Unconjugated

**Modification:** Unmodified

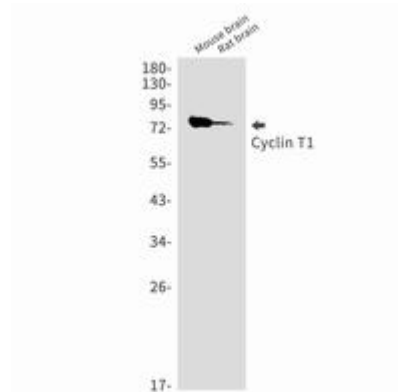
**Constituents:** PBS (without Mg<sup>2+</sup> and Ca<sup>2+</sup>), pH 7.3 containing 50% glycerol, 0.5% BSA and 0.02% sodium azide

**Research Areas:** Microbiology

**Storage & Shipping:** Store at -20°C. Avoid repeated freezing and thawing



Western blot analysis of Cyclin T1 in Hela, Jurkat, K562 lysates using Cyclin T1 antibody.



Western blot analysis of Cyclin T1 in mouse brain, rat brain lysates using Cyclin T1 antibody.