

## CYCLIN E2 RABBIT MAB

**Cat.#:** N262091

**Product Name:** Anti-Cyclin E2 Rabbit Monoclonal Antibody

**Synonyms:** CCNE2; G1/S-specific cyclin-E2

**UNIPROT ID:** O96020

**Background:** The human Cyclin E2 gene encodes a 404 amino acid protein that is most closely related to Cyclin E. Cyclin E2 mRNA levels peaks at the G1 / S transition. Cyclin E2 associates with Cdk2 in a functional kinase complex that is inhibited by both p27 (Kip1) and p21 (Cip1). Cyclin E2 / Cdk2 phosphorylates histone H1 in vitro. G1 cyclin E controls the initiation of DNA synthesis by activating CDK2. Abnormally high levels of cyclin E expression have frequently been observed in human cancers.

**Immunogen:** A synthetic peptide of human Cyclin E2

**Applications:** WB, ICC/IF, IP

**Recommended Dilutions:** WB: 1/500-1/1000 IF: 1/50-1/200 IP: 1/20

**Host Species:** Rabbit

**Clonality:** Rabbit Monoclonal

**Clone ID:** R04-1A4

**MW:** Calculated MW: 47 kDa; Observed MW: 47 kDa

**Isotype:** IgG

**Purification:** Affinity Purified

**Species Reactivity:** Human

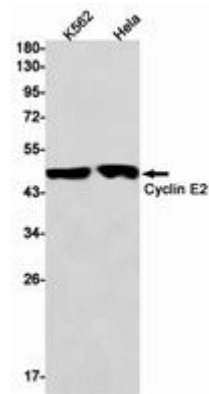
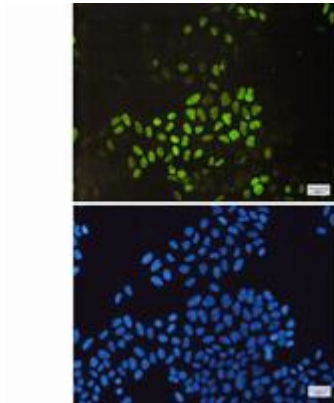
**Conjugation:** Unconjugated

**Modification:** Unmodified

**Constituents:** PBS (without Mg<sup>2+</sup> and Ca<sup>2+</sup>), pH 7.3 containing 50% glycerol, 0.5% BSA and 0.02% sodium azide

**Research Areas:** Cell Biology

**Storage & Shipping:** Store at -20°C. Avoid repeated freezing and thawing



Immunocytochemistry analysis of Cyclin E2 (green) in HeLa using Cyclin E2 antibody, and DAPI (blue)

Western blot analysis of Cyclin E2 in K562, HeLa lysates using Cyclin E2 antibody.