

## CYCLIN B2 RABBIT MAB

**Cat.#:** N263289

**Product Name:** Anti-Cyclin B2 Rabbit Monoclonal Antibody

**Synonyms:** ccnb2; CycB2; Cyclin B2; G2/mitotic specific cyclin B2

**UNIPROT ID:** O95067

**Background:** Cyclin B2 is a member of the cyclin family, specifically the B-type cyclins. The B-type cyclins, B1 and B2, associate with p34cdc2 and are essential components of the cell cycle regulatory machinery. Essential for the control of the cell cycle at the G2/M (mitosis) transition.

**Immunogen:** Recombinant protein of human Cyclin B2/CCNB2

**Applications:** WB,IP

**Recommended Dilutions:** WB: 1/500-1/1000 IP: 1/20

**Host Species:** Rabbit

**Clonality:** Rabbit Monoclonal

**Clone ID:** R05-3A6

**MW:** Calculated MW: 45 kDa; Observed MW: 45 kDa

**Isotype:** IgG

**Purification:** Affinity Purified

**Species Reactivity:** Human

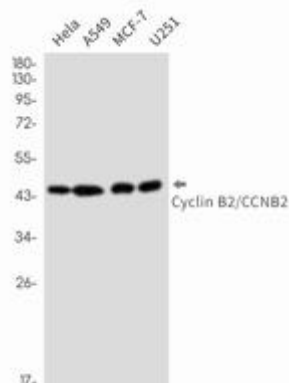
**Conjugation:** Unconjugated

**Modification:** Unmodified

**Constituents:** PBS (without Mg<sup>2+</sup> and Ca<sup>2+</sup>), pH 7.3 containing 50% glycerol, 0.5% BSA and 0.02% sodium azide

**Research Areas:** Cell Biology

**Storage & Shipping:** Store at -20°C. Avoid repeated freezing and thawing



Western blot analysis of Cyclin B2/CCNB2 in HeLa, A549, MCF-7, U251 lysates using Cyclin B2 antibody.



# Product Description

Pioneering GTPase and Oncogene Product Development since 2010

---