

## CYCLIN B1 RABBIT PAB

**Cat.#:** N225354

**Product Name:** Anti-Cyclin B1 Rabbit pAb

**Synonyms:** CCNB1; CCNB; G2/mitotic-specific cyclin-B1

**UNIPROT ID:** P14635

**Background:** Essential for the control of the cell cycle at the G2/M (mitosis) transition. a member of the highly conserved cyclin family, whose members are characterized by a dramatic periodicity in protein abundance through the cell cycle. Cyclins function as regulators of CDK kinases.

**Immunogen:** The antiserum was produced against synthesized peptide derived from human Cyclin B1. AA range:91-140

**Applications:** WB,IHC-F,IHC-P,ICC/IF,ELISA

**Recommended Dilutions:** WB: 1/500-1/1000 IHC: 1/50-1/100 IF: 1/50-1/200 ELISA: 1/10000

**Host Species:** Rabbit

**Clonality:** Rabbit Polyclonal

**Clone ID:** -

**MW:** Calculated MW: 48 kDa; Observed MW: 60 kDa

**Isotype:** IgG

**Purification:** Affinity Purified

**Species Reactivity:** Human,Mouse,Rat

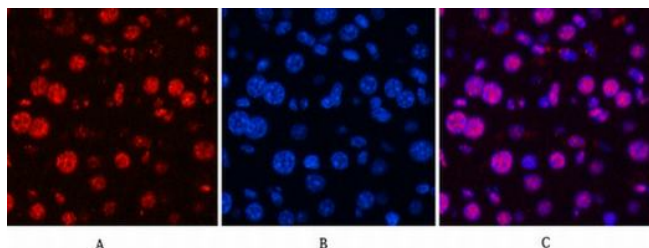
**Conjugation:** Unconjugated

**Modification:** Unmodified

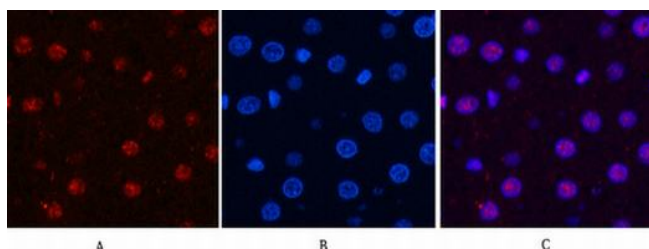
**Constituents:** PBS (without Mg<sup>2+</sup> and Ca<sup>2+</sup>), pH 7.3 containing 50% glycerol, 0.5% BSA and 0.02% sodium azide

**Research Areas:** Cell Biology

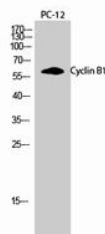
**Storage & Shipping:** Store at -20°C. Avoid repeated freezing and thawing



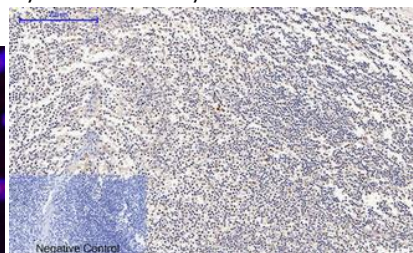
Immunofluorescence analysis of Cyclin B1 in mouse liver using Cyclin B1 antibody (red), and DAPI (blue).



Immunofluorescence analysis of Cyclin B1 in rat liver using Cyclin B1 antibody (red).



Western blot analysis of Cyclin B1 in PC-12 lysates using Cyclin B1 antibody.



Immunohistochemistry analysis of paraffin-embedded Human tonsil using Cyclin B1 antibody. High-pressure and temperature Sodium Citrate pH 6.0 was used for antigen retrieval. Negative control was used by secondary antibody only.