

CYCLIN B1 RABBIT MAB

Cat.#: N261758

Product Name: Anti-Cyclin B1 Rabbit Monoclonal Antibody

Synonyms: CCNB1; CCNB; G2/mitotic-specific cyclin-B1

UNIPROT ID: P24860

Background: Essential for the control of the cell cycle at the G2/M (mitosis) transition.

Immunogen: Recombinant protein of mouse Cyclin B1

Applications: WB, ICC/IF

Recommended Dilutions: WB: 1/500-1/1000 IF: 1/50-1/200

Host Species: Rabbit

Clonality: Rabbit Monoclonal

Clone ID: R08-9B7

MW: Calculated MW: 48 kDa; Observed MW: 55 kDa

Isotype: IgG

Purification: Affinity Purified

Species Reactivity: Human

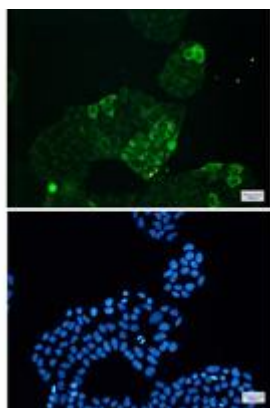
Conjugation: Unconjugated

Modification: Unmodified

Constituents: PBS (without Mg²⁺ and Ca²⁺), pH 7.3 containing 50% glycerol, 0.5% BSA and 0.02% sodium azide

Research Areas: Cell Biology

Storage & Shipping: Store at -20°C. Avoid repeated freezing and thawing



Immunocytochemistry analysis of Cyclin B1 (green) in HeLa using Cyclin B1 antibody, and DAPI (blue)



Western blot analysis of Cyclin B1 in Jurkat lysates using Cyclin B1 antibody.



Product Description

Pioneering GTPase and Oncogene Product Development since 2010
