

## CYB5R1 RABBIT PAB

**Cat.#:** S218560

**Product Name:** Anti-CYB5R1 Rabbit Polyclonal Antibody

**Synonyms:** B5R1; B5R2; B5R.1; NQO3A2; humb5R2

**UNIPROT ID:** Q9UHQ9 (Gene Accession - BC018732 )

**Background:** NADH-cytochrome b5 reductases participate in a variety of physiological processes including biosynthesis of cholesterol, methemoglobin reduction of erythrocytes, elongation of fatty acids and metabolism of drugs. CYB5R1 (cytochrome b5 reductase 1), also known as NADH-cytochrome b5 reductase 1, B5R1, NQO3A2, humb5R2 or NAD(P)H:quinone oxidoreductase type 3 polypeptide A2, is a 305 amino acid single-pass membrane protein that contains one FAD-binding FR-type domain and belongs to the flavoprotein pyridine nucleotide cytochrome reductase family. Widely expressed, CYB5R1 binds FAD as a cofactor and is encoded by a gene located on human chromosome 1. Human chromosome 1 spans 260 million base pairs, contains over 3,000 genes, comprises nearly 8% of the human genome and houses a large number of disease-associated genes, including those that are involved in familial adenomatous polyposis, Stickler syndrome, Parkinson's disease, Gaucher disease, schizophrenia and Usher syndrome.

**Immunogen:** Fusion protein of human CYB5R1

**Applications:** ELISA, WB, IHC

**Recommended Dilutions:** IHC: 25-100;WB: 200-1000;ELISA: 5000-10000

**Host Species:** Rabbit

**Clonality:** Rabbit Polyclonal

**Isotype:** Immunogen-specific rabbit IgG

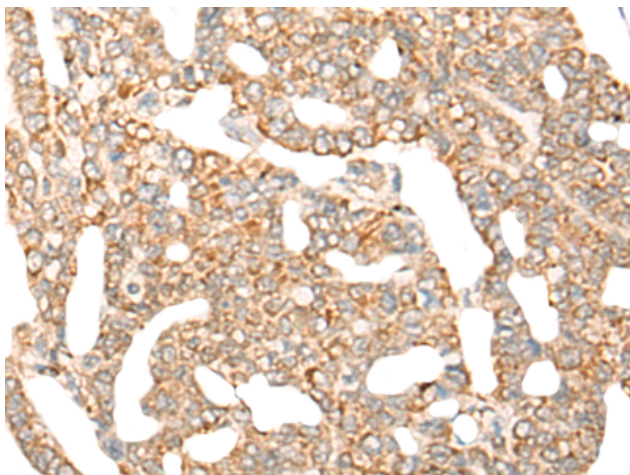
**Purification:** Antigen affinity purification

**Species Reactivity:** Human, Mouse, Rat

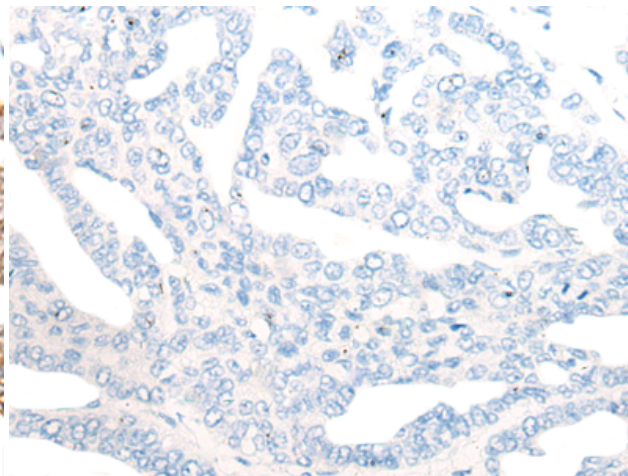
**Constituents:** PBS (without Mg<sup>2+</sup> and Ca<sup>2+</sup>), pH 7.4, 150 mM NaCl, 0.05% Sodium Azide and 40% glycerol

**Research Areas:** Metabolism, Cardiovascular

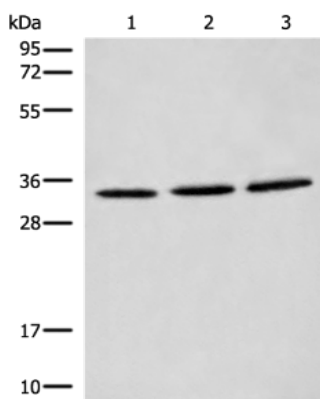
**Storage & Shipping:** Store at -20°C. Avoid repeated freezing and thawing



Immunohistochemistry analysis of paraffin embedded Human liver cancer tissue using 218560(CYB5R1 Antibody) at a dilution of 1/30(Cytoplasm and Cell membrane).



In comparison with the IHC on the left, the same paraffin-embedded Human liver cancer tissue is first treated with the fusion protein and then with 218560(Anti-CYB5R1 Antibody) at dilution 1/30.



Gel: 12%SDS-PAGE, Lysate: 40  $\mu$ g;  
Lane 1-3: K562, HeLa and HEPG2 cell lysates;  
Primary antibody: 218560(CYB5R1 Antibody) at dilution 1/300;  
Secondary antibody: Goat anti rabbit IgG at 1/8000 dilution;  
Exposure time: 5 seconds