

CYB5D1 RABBIT PAB

Cat.#: S221864

Product Name: Anti-CYB5D1 Rabbit Polyclonal Antibody

Synonyms:

UNIPROT ID: Q6P9G0 (Gene Accession - NP_653208)

Background: CYB5D1 belongs to the cytochrome b5 family and contains 1 cytochrome b5 heme-binding domain. Cytochromes b5 are ubiquitous electron transport proteins found in animals, plants and yeasts. There are 2 named isoforms produced by alternative splicing.

Immunogen: Synthetic peptide of human CYB5D1

Applications: ELISA, WB, IHC

Recommended Dilutions: IHC: 20-100;WB: 200-1000;ELISA: 5000-10000

Host Species: Rabbit

Clonality: Rabbit Polyclonal

Isotype: Immunogen-specific rabbit IgG

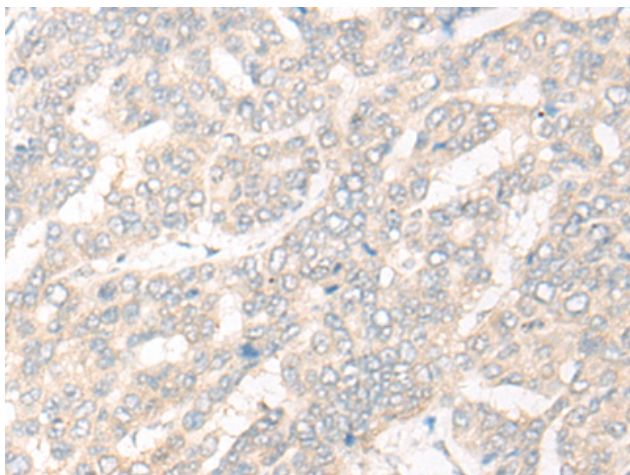
Purification: Antigen affinity purification

Species Reactivity: Human, Mouse

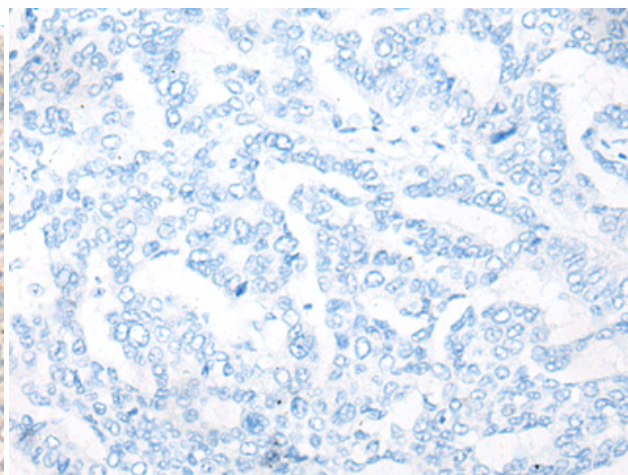
Constituents: PBS (without Mg²⁺ and Ca²⁺), pH 7.4, 150 mM NaCl, 0.05% Sodium Azide and 40% glycerol

Research Areas: Cardiovascular

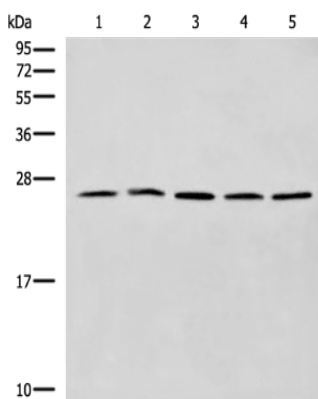
Storage & Shipping: Store at -20°C. Avoid repeated freezing and thawing



Immunohistochemistry analysis of paraffin embedded Human liver cancer tissue using 221864 (CYB5D1 Antibody) at a dilution of 1/20 (Cytoplasm).



In comparison with the IHC on the left, the same paraffin-embedded Human liver cancer tissue is first treated with the synthetic peptide and then with 221864 (Anti-CYB5D1 Antibody) at dilution 1/20.



Gel: 12% SDS-PAGE, Lysate: 40 μ g;
Lane 1-5: HeLa, PC-3, A549, 293T and 231 cell lysates;
Primary antibody: 221864 (CYB5D1 Antibody) at dilution 1/300;
Secondary antibody: Goat anti rabbit IgG at 1/8000 dilution;
Exposure time: 1 minute