

## CXCR6 RABBIT PAB

**Cat.#:** N225016

**Product Name:** Anti-CXCR6 Rabbit pAb

**Synonyms:** CXCR6; BONZO; STRL33; TYMSTR; C-X-C chemokine receptor type 6; CXC-R6; CXCR-6; CDw186; G-protein coupled receptor STRL33; G-protein coupled receptor bonzo; CD186

**UNIPROT ID:** O00574

**Background:** Receptor for the C-X-C chemokine CXCL16.

**Immunogen:** The antiserum was produced against synthesized peptide derived from the N-terminal region of human CXCR6. AA range:1-50

**Applications:** WB,IHC-P,ELISA

**Recommended Dilutions:** WB: 1/500-1/1000 IHC: 1/50-1/100 ELISA: 1/10000

**Host Species:** Rabbit

**Clonality:** Rabbit Polyclonal

**Clone ID:** -

**MW:** Calculated MW: 39 kDa; Observed MW: 39 kDa

**Isotype:** IgG

**Purification:** Affinity Purified

**Species Reactivity:** Human

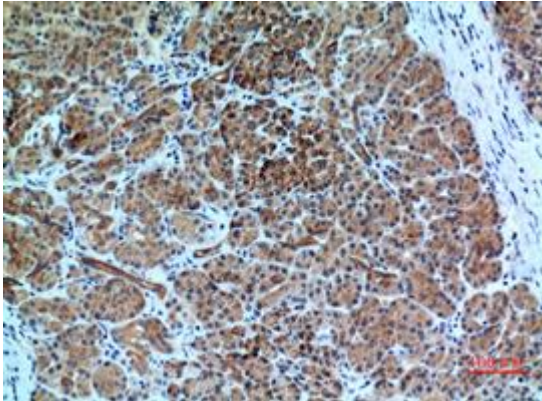
**Conjugation:** Unconjugated

**Modification:** Unmodified

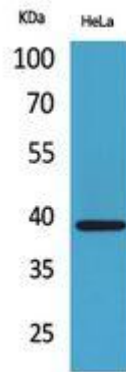
**Constituents:** PBS (without Mg<sup>2+</sup> and Ca<sup>2+</sup>), pH 7.3 containing 50% glycerol, 0.5% BSA and 0.02% sodium azide

**Research Areas:** Microbiology

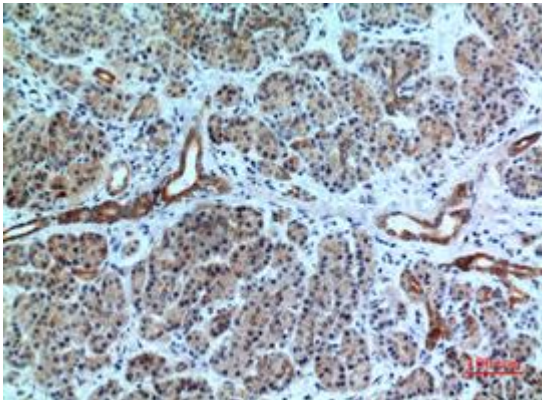
**Storage & Shipping:** Store at -20°C. Avoid repeated freezing and thawing



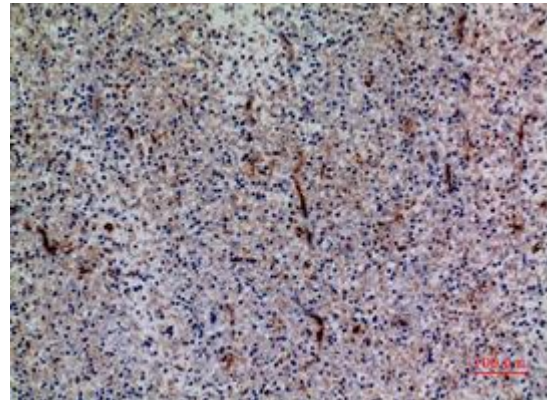
Immunohistochemistry analysis of paraffin-embedded Human pancreas using CXCR6 antibody. High-pressure and temperature Sodium Citrate pH 6.0 was used for antigen retrieval.



Western blot analysis of CXCR6 in HeLa lysates using CXCR6 antibody.



Immunohistochemistry analysis of paraffin-embedded Human pancreas using CXCR6 antibody. High-pressure and temperature Sodium Citrate pH 6.0 was used for antigen retrieval.



Immunohistochemistry analysis of paraffin-embedded Human spleen using CXCR6 antibody. High-pressure and temperature Sodium Citrate pH 6.0 was used for antigen retrieval.