

CULLIN 4A RABBIT MAB

Cat.#: N263288

Product Name: Anti-Cullin 4A Rabbit Monoclonal Antibody

Synonyms: Cul4a; Cullin-4A

UNIPROT ID: Q13619

Background: Core component of multiple cullin-RING-based E3 ubiquitin-protein ligase complexes which mediate the ubiquitination and subsequent proteasomal degradation of target proteins. As a scaffold protein may contribute to catalysis through positioning of the substrate and the ubiquitin-conjugating enzyme.

Immunogen: A synthetic peptide of human Cullin 4A/CUL-4A

Applications: WB,IHC-P,IP

Recommended Dilutions: WB: 1/500-1/1000 IHC: 1/50-1/100 IP: 1/20

Host Species: Rabbit

Clonality: Rabbit Monoclonal

Clone ID: R06-0C5

MW: Calculated MW: 88 kDa; Observed MW: 88 kDa

Isotype: IgG

Purification: Affinity Purified

Species Reactivity: Human

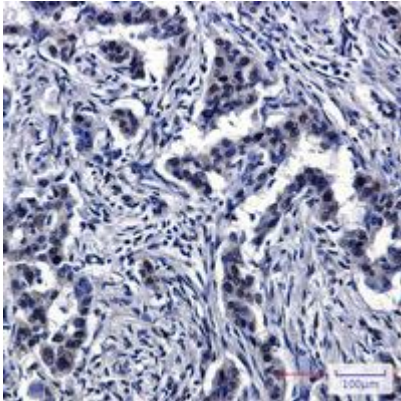
Conjugation: Unconjugated

Modification: Unmodified

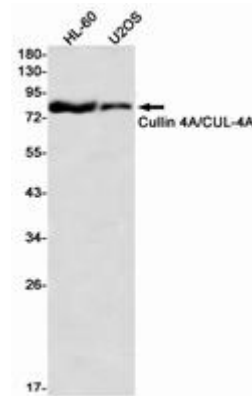
Constituents: PBS (without Mg²⁺ and Ca²⁺), pH 7.3 containing 50% glycerol, 0.5% BSA and 0.02% sodium azide

Research Areas: Cell Biology

Storage & Shipping: Store at -20°C. Avoid repeated freezing and thawing



Immunohistochemistry analysis of paraffin-embedded Human lung cancer using Cullin 4A/CUL4A antibody. High-pressure and temperature Sodium Citrate pH 6.0 was used for antigen retrieval.



Western blot analysis of Cullin 4A/CUL4A in HL-60, U2OS lysates using Cullin 4A antibody.