

CULLIN 1 RABBIT MAB

Cat.#: N262078

Product Name: Anti-Cullin 1 Rabbit Monoclonal Antibody

Synonyms: CUL1; Cullin1

UNIPROT ID: Q13616

Background: Core component of multiple cullin-RING-based SCF (SKP1-CUL1-F-box protein) E3 ubiquitin-protein ligase complexes, which mediate the ubiquitination of proteins involved in cell cycle progression, signal transduction and transcription.

Immunogen: A synthetic peptide of human Cullin 1

Applications: WB, ICC/IF

Recommended Dilutions: WB: 1/500-1/1000 IF: 1/50-1/200

Host Species: Rabbit

Clonality: Rabbit Monoclonal

Clone ID: R05-3D2

MW: Calculated MW: 90 kDa; Observed MW: 90 kDa

Isotype: IgG

Purification: Affinity Purified

Species Reactivity: Human, Mouse, Rat

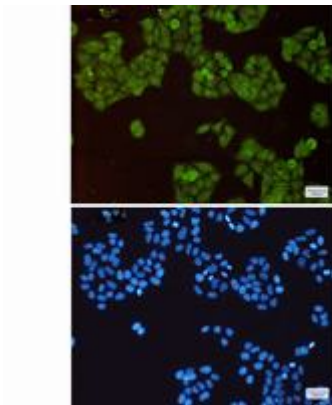
Conjugation: Unconjugated

Modification: Unmodified

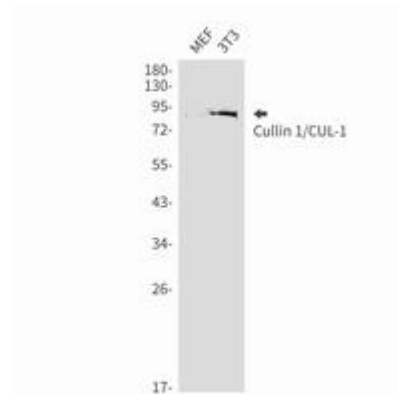
Constituents: PBS (without Mg²⁺ and Ca²⁺), pH 7.3 containing 50% glycerol, 0.5% BSA and 0.02% sodium azide

Research Areas: Cell Biology

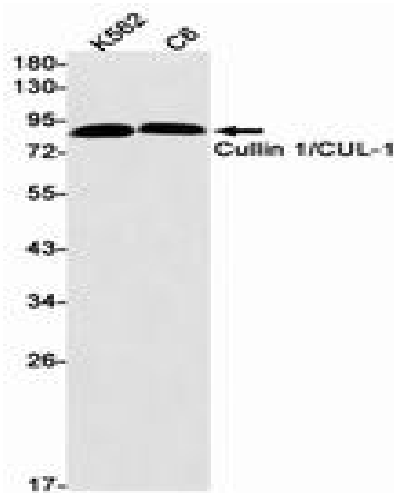
Storage & Shipping: Store at -20°C. Avoid repeated freezing and thawing



Immunocytochemistry analysis of Cullin 1 (green) in HeLa using Cullin 1 antibody, and DAPI (blue)



Western blot analysis of Cullin 1/CUL-1 in MEF, 3T3 lysates using Cullin 1 antibody.



Western blot analysis of Cullin 1/CUL-1 in K562, C6 lysates using Cullin 1/CUL-1 antibody.