

## CUL7 RABBIT PAB

**Cat.#:** S216453

**Product Name:** Anti-CUL7 Rabbit Polyclonal Antibody

**Synonyms:** 3M1; KIAA0076; dJ20C7.5

**UNIPROT ID:** Q14999 (Gene Accession - BC033647 )

**Background:** The protein encoded by this gene is a component of an E3 ubiquitin-protein ligase complex. The encoded protein interacts with TP53, CUL9, and FBXW8 proteins. Defects in this gene are a cause of 3M syndrome type 1 (3M1). Two transcript variants encoding different isoforms have been found for this gene. CUL-7 is highly expressed in fetal kidney and adult skeletal muscle in addition to abundant expression in fetal brain, and adult pancreas, kidney, placenta and heart. It is also detected in trophoblasts, lymphoblasts, osteoblasts, chondrocytes and skin fibroblasts.

**Immunogen:** Fusion protein of human CUL7

**Applications:** ELISA, WB, IHC

**Recommended Dilutions:** IHC: 25-100;WB: 200-1000;ELISA: 5000-10000

**Host Species:** Rabbit

**Clonality:** Rabbit Polyclonal

**Isotype:** Immunogen-specific rabbit IgG

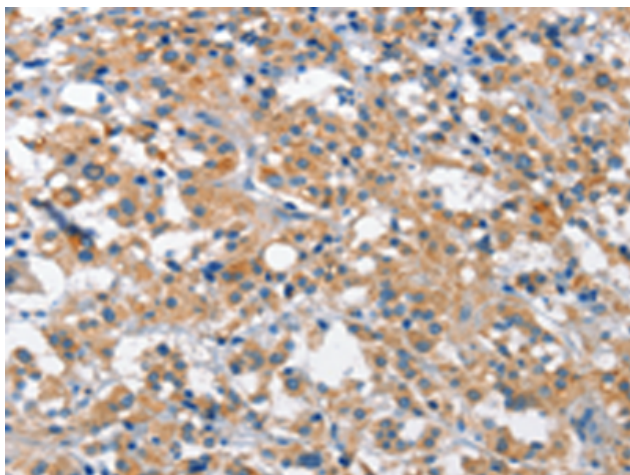
**Purification:** Antigen affinity purification

**Species Reactivity:** Human, Rat

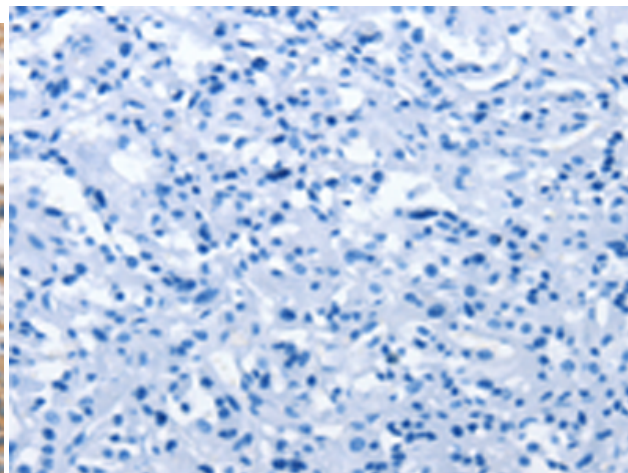
**Constituents:** PBS (without Mg<sup>2+</sup> and Ca<sup>2+</sup>), pH 7.4, 150 mM NaCl, 0.05% Sodium Azide and 40% glycerol

**Research Areas:** Cell Biology

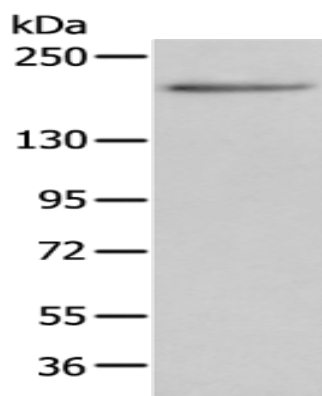
**Storage & Shipping:** Store at -20°C. Avoid repeated freezing and thawing



Immunohistochemistry analysis of paraffin embedded Human thyroid cancer tissue using 216453(CUL7 Antibody) at a dilution of 1/35(cytoplasm).



In comparison with the IHC on the left, the same paraffin-embedded Human thyroid cancer tissue is first treated with the fusion protein and then with 216453(Anti-CUL7 Antibody) at dilution 1/35.



Gel: 6%SDS-PAGE, Lysate: 40  $\mu$ g;  
Lane: A431 cell;  
Primary antibody: 216453(CUL7 Antibody) at dilution 1/200;  
Secondary antibody: Goat anti rabbit IgG at 1/8000 dilution;  
Exposure time: 3 seconds